



1999

Sacramento River Aerial Atlas

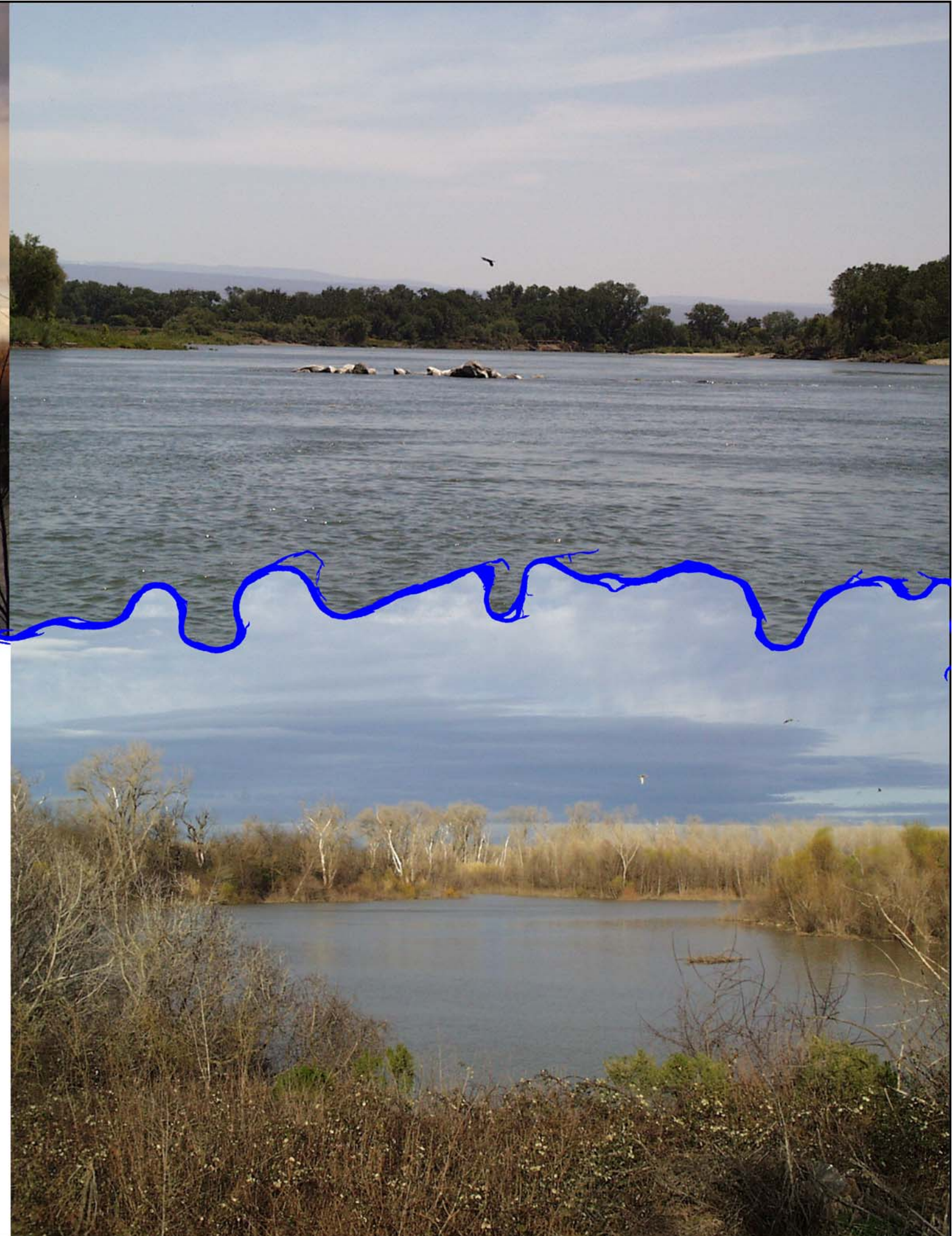
Red Bluff (River Mile 243) to Keswick Dam (River Mile 302)

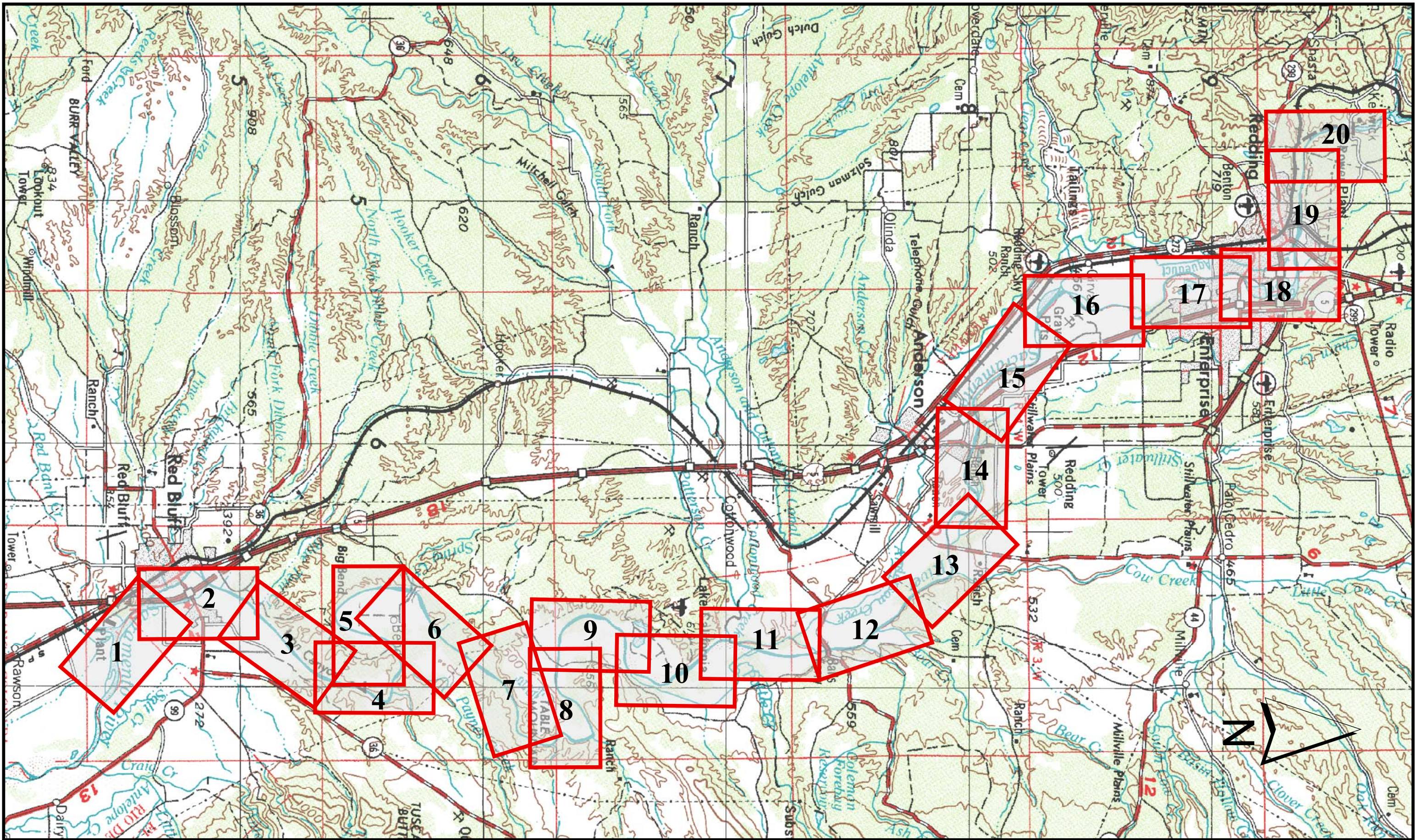
Derived From WR-BNE-C 1:7,200 Color Photos

flown on May 24, 1999

DRAFT
July 2002

STATE OF CALIFORNIA
THE RESOURCES AGENCY
DEPARTMENT OF WATER RESOURCES
NORTHERN DISTRICT





LOCATION MAP

Legend

 PAGE NUMBER

STATE OF CALIFORNIA
 THE RESOURCES AGENCY
 DEPARTMENT OF WATER RESOURCES
 NORTHERN DISTRICT

SACRAMENTO RIVER
 RED BLUFF (River Mile 243)
 TO
 KESWICK DAM (River Mile 302)

1999 AERIAL PHOTO ATLAS
 Data source: WR-BNE-C
 1999 1:7,200 Color Photos





0 500 1,000 2,000 Feet

* 1 inch = 1,000 feet when printed in 11x17 format
 * Use the scale bar to calculate distances when printed in different formats

⊕ River miles
 Digitized from 1991 Aerial Atlas
 (Source: US Army Corps of Engineers, Sacramento District)

STATE OF CALIFORNIA
 THE RESOURCES AGENCY
 DEPARTMENT OF WATER RESOURCES
 NORTHERN DISTRICT

SACRAMENTO RIVER
 RED BLUFF (River Mile 243)
 TO
 KESWICK DAM (River Mile 302)

Data source: WR-BNE-C
 1999 1:7,200 Color Photos
 with a transparent DRG overlay



0 500 1,000 2,000 Feet

* 1 inch = 1,000 feet when printed in 11x17 format
 * Use the scale bar to calculate distances when printed in different formats

⊕ River miles
 Digitized from 1991 Aerial Atlas
 (Source: US Army Corps of Engineers, Sacramento District)

STATE OF CALIFORNIA
 THE RESOURCES AGENCY
 DEPARTMENT OF WATER RESOURCES
 NORTHERN DISTRICT

SACRAMENTO RIVER
 RED BLUFF (River Mile 243)
 TO
 KESWICK DAM (River Mile 302)

Data source: WR-BNE-C
 1999 1:7,200 Color Photos
 with a transparent DRG overlay



0 500 1,000 2,000 Feet

* 1 inch = 1,000 feet when printed in 11x17 format

* Use the scale bar to calculate distances when printed in different formats

⊕ River miles

Digitized from 1991 Aerial Atlas

(Source: US Army Corps of Engineers, Sacramento District)

STATE OF CALIFORNIA
 THE RESOURCES AGENCY
 DEPARTMENT OF WATER RESOURCES
 NORTHERN DISTRICT

SACRAMENTO RIVER
 RED BLUFF (River Mile 243)
 TO
 KESWICK DAM (River Mile 302)

Data source: WR-BNE-C
 1999 1:7,200 Color Photos
 with a transparent DRG overlay



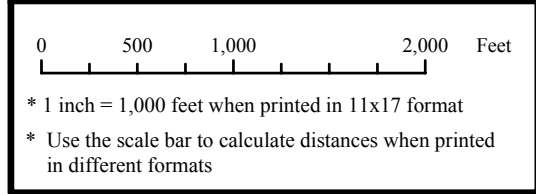
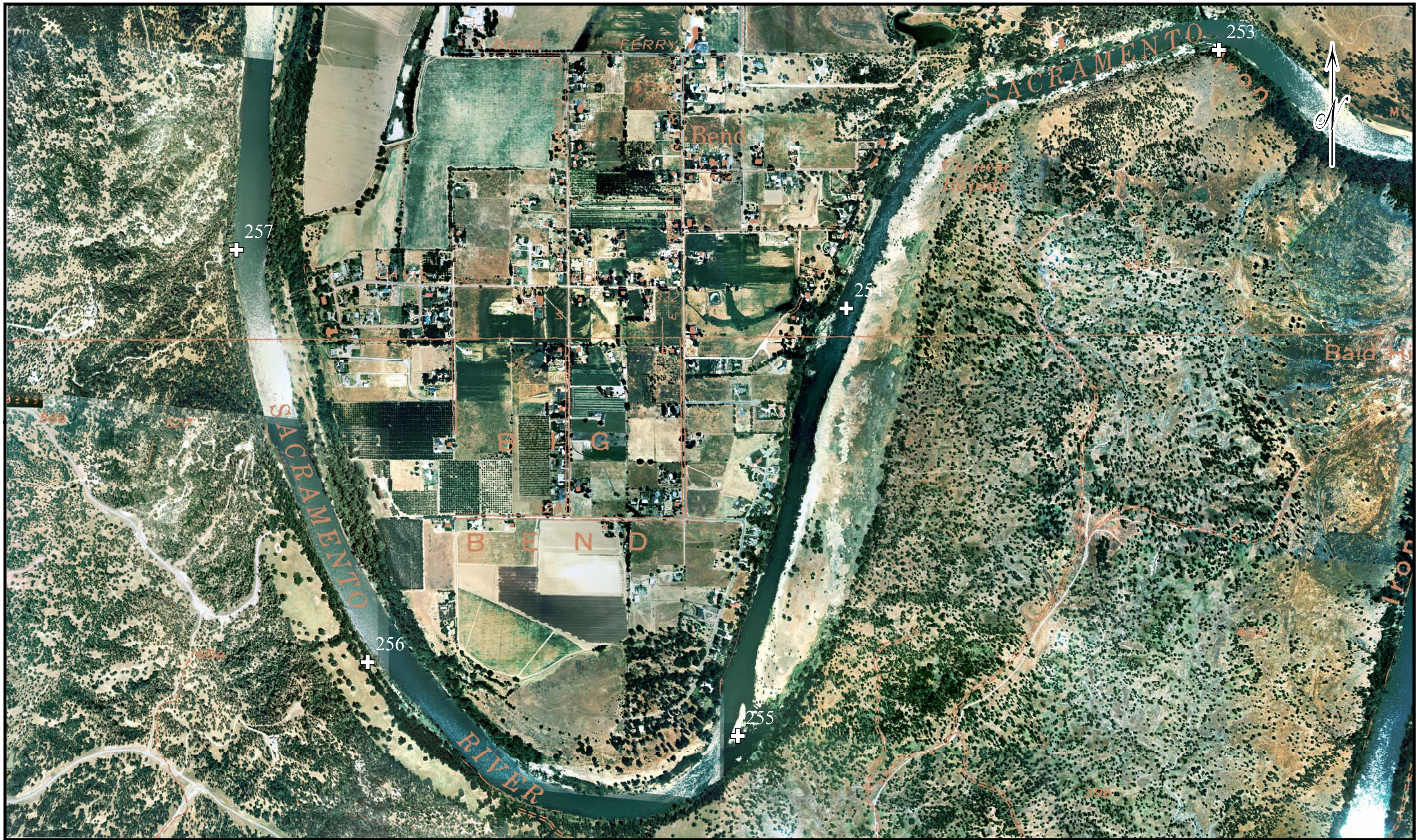
0 500 1,000 2,000 Feet
 * 1 inch = 1,000 feet when printed in 11x17 format
 * Use the scale bar to calculate distances when printed in different formats

⊕ River miles
 Digitized from 1991 Aerial Atlas
 (Source: US Army Corps of Engineers, Sacramento District)

STATE OF CALIFORNIA
 THE RESOURCES AGENCY
 DEPARTMENT OF WATER RESOURCES
 NORTHERN DISTRICT

SACRAMENTO RIVER
 RED BLUFF (River Mile 243)
 TO
 KESWICK DAM (River Mile 302)

Data source: WR-BNE-C
 1999 1:7,200 Color Photos
 with a transparent DRG overlay



+ River miles
 Digitized from 1991 Aerial Atlas
(Source: US Army Corps of Engineers, Sacramento District)

STATE OF CALIFORNIA
 THE RESOURCES AGENCY
 DEPARTMENT OF WATER RESOURCES
 NORTHERN DISTRICT

SACRAMENTO RIVER
 RED BLUFF (River Mile 243)
 TO
 KESWICK DAM (River Mile 302)

Data source: WR-BNE-C
 1999 1:7,200 Color Photos
 with a transparent DRG overlay



0 500 1,000 2,000 Feet
 * 1 inch = 1,000 feet when printed in 11x17 format
 * Use the scale bar to calculate distances when printed in different formats

⊕ River miles
 Digitized from 1991 Aerial Atlas
 (Source: US Army Corps of Engineers, Sacramento District)

STATE OF CALIFORNIA
 THE RESOURCES AGENCY
 DEPARTMENT OF WATER RESOURCES
 NORTHERN DISTRICT

SACRAMENTO RIVER
 RED BLUFF (River Mile 243)
 TO
 KESWICK DAM (River Mile 302)

Data source: WR-BNE-C
 1999 1:7,200 Color Photos
 with a transparent DRG overlay



0 500 1,000 2,000 Feet

* 1 inch = 1,000 feet when printed in 11x17 format
 * Use the scale bar to calculate distances when printed in different formats

⊕ River miles
 Digitized from 1991 Aerial Atlas
 (Source: US Army Corps of Engineers, Sacramento District)

STATE OF CALIFORNIA
 THE RESOURCES AGENCY
 DEPARTMENT OF WATER RESOURCES
 NORTHERN DISTRICT

SACRAMENTO RIVER
 RED BLUFF (River Mile 243)
 TO
 KESWICK DAM (River Mile 302)

Data source: WR-BNE-C
 1999 1:7,200 Color Photos
 with a transparent DRG overlay



0 500 1,000 2,000 Feet

* 1 inch = 1,000 feet when printed in 11x17 format

* Use the scale bar to calculate distances when printed in different formats

⊕ River miles

Digitized from 1991 Aerial Atlas

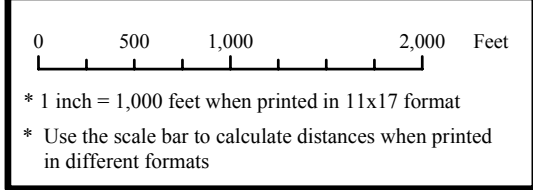
(Source: US Army Corps of Engineers, Sacramento District)

STATE OF CALIFORNIA
 THE RESOURCES AGENCY
 DEPARTMENT OF WATER RESOURCES
 NORTHERN DISTRICT

SACRAMENTO RIVER
 RED BLUFF (River Mile 243)
 TO
 KESWICK DAM (River Mile 302)

Data source: WR-BNE-C
 1999 1:7,200 Color Photos
 with a transparent DRG overlay

8



+ River miles
 Digitized from 1991 Aerial Atlas
(Source: US Army Corps of Engineers, Sacramento District)

STATE OF CALIFORNIA
 THE RESOURCES AGENCY
 DEPARTMENT OF WATER RESOURCES
 NORTHERN DISTRICT

SACRAMENTO RIVER
 RED BLUFF (River Mile 243)
 TO
 KESWICK DAM (River Mile 302)

Data source: WR-BNE-C
 1999 1:7,200 Color Photos
 with a transparent DRG overlay



0 500 1,000 2,000 Feet
 * 1 inch = 1,000 feet when printed in 11x17 format
 * Use the scale bar to calculate distances when printed in different formats

⊕ River miles
 Digitized from 1991 Aerial Atlas
 (Source: US Army Corps of Engineers, Sacramento District)

STATE OF CALIFORNIA
 THE RESOURCES AGENCY
 DEPARTMENT OF WATER RESOURCES
 NORTHERN DISTRICT

SACRAMENTO RIVER
 RED BLUFF (River Mile 243)
 TO
 KESWICK DAM (River Mile 302)

Data source: WR-BNE-C
 1999 1:7,200 Color Photos
 with a transparent DRG overlay



0 500 1,000 2,000 Feet

* 1 inch = 1,000 feet when printed in 11x17 format

* Use the scale bar to calculate distances when printed in different formats

⊕ River miles

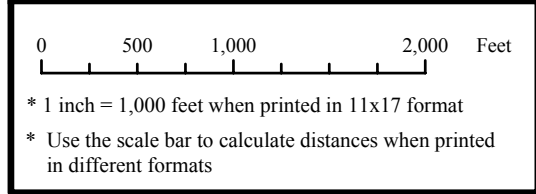
Digitized from 1991 Aerial Atlas

(Source: US Army Corps of Engineers, Sacramento District)

STATE OF CALIFORNIA
 THE RESOURCES AGENCY
 DEPARTMENT OF WATER RESOURCES
 NORTHERN DISTRICT

SACRAMENTO RIVER
 RED BLUFF (River Mile 243)
 TO
 KESWICK DAM (River Mile 302)

Data source: WR-BNE-C
 1999 1:7,200 Color Photos
 with a transparent DRG overlay

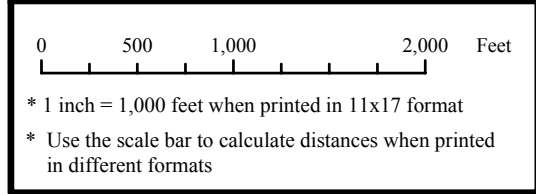


+ River miles
 Digitized from 1991 Aerial Atlas
(Source: US Army Corps of Engineers, Sacramento District)

STATE OF CALIFORNIA
 THE RESOURCES AGENCY
 DEPARTMENT OF WATER RESOURCES
 NORTHERN DISTRICT

SACRAMENTO RIVER
 RED BLUFF (River Mile 243)
 TO
 KESWICK DAM (River Mile 302)

Data source: WR-BNE-C
 1999 1:7,200 Color Photos
 with a transparent DRG overlay



+ River miles
 Digitized from 1991 Aerial Atlas
(Source: US Army Corps of Engineers, Sacramento District)

STATE OF CALIFORNIA
 THE RESOURCES AGENCY
 DEPARTMENT OF WATER RESOURCES
 NORTHERN DISTRICT

SACRAMENTO RIVER
 RED BLUFF (River Mile 243)
 TO
 KESWICK DAM (River Mile 302)

Data source: WR-BNE-C
 1999 1:7,200 Color Photos
 with a transparent DRG overlay



0 500 1,000 2,000 Feet
* 1 inch = 1,000 feet when printed in 11x17 format
* Use the scale bar to calculate distances when printed in different formats

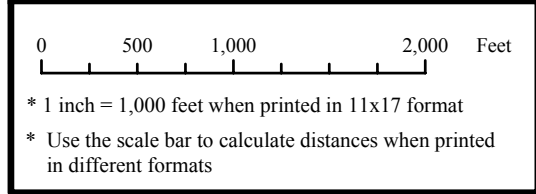
⊕ River miles
Digitized from 1991 Aerial Atlas
(Source: US Army Corps of Engineers, Sacramento District)

STATE OF CALIFORNIA
THE RESOURCES AGENCY
DEPARTMENT OF WATER RESOURCES
NORTHERN DISTRICT

SACRAMENTO RIVER
RED BLUFF (River Mile 243)
TO
KESWICK DAM (River Mile 302)

Data source: WR-BNE-C
1999 1:7,200 Color Photos
with a transparent DRG overlay

14



+ River miles
 Digitized from 1991 Aerial Atlas
(Source: US Army Corps of Engineers, Sacramento District)

STATE OF CALIFORNIA
 THE RESOURCES AGENCY
 DEPARTMENT OF WATER RESOURCES
 NORTHERN DISTRICT

SACRAMENTO RIVER
 RED BLUFF (River Mile 243)
 TO
 KESWICK DAM (River Mile 302)

Data source: WR-BNE-C
 1999 1:7,200 Color Photos
 with a transparent DRG overlay



0 500 1,000 2,000 Feet
 * 1 inch = 1,000 feet when printed in 11x17 format
 * Use the scale bar to calculate distances when printed in different formats

⊕ River miles
 Digitized from 1991 Aerial Atlas
 (Source: US Army Corps of Engineers, Sacramento District)

STATE OF CALIFORNIA
 THE RESOURCES AGENCY
 DEPARTMENT OF WATER RESOURCES
 NORTHERN DISTRICT

SACRAMENTO RIVER
 RED BLUFF (River Mile 243)
 TO
 KESWICK DAM (River Mile 302)

Data source: WR-BNE-C
 1999 1:7,200 Color Photos
 with a transparent DRG overlay



0 500 1,000 2,000 Feet

* 1 inch = 1,000 feet when printed in 11x17 format
 * Use the scale bar to calculate distances when printed in different formats

⊕ River miles
 Digitized from 1991 Aerial Atlas
 (Source: US Army Corps of Engineers, Sacramento District)

STATE OF CALIFORNIA
 THE RESOURCES AGENCY
 DEPARTMENT OF WATER RESOURCES
 NORTHERN DISTRICT

SACRAMENTO RIVER
 RED BLUFF (River Mile 243)
 TO
 KESWICK DAM (River Mile 302)

Data source: WR-BNE-C
 1999 1:7,200 Color Photos
 with a transparent DRG overlay



0 500 1,000 2,000 Feet

* 1 inch = 1,000 feet when printed in 11x17 format

* Use the scale bar to calculate distances when printed in different formats

⊕ River miles

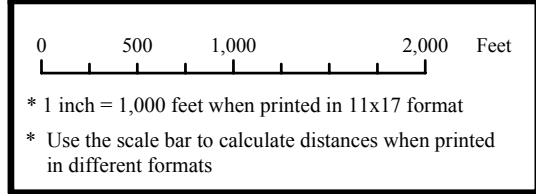
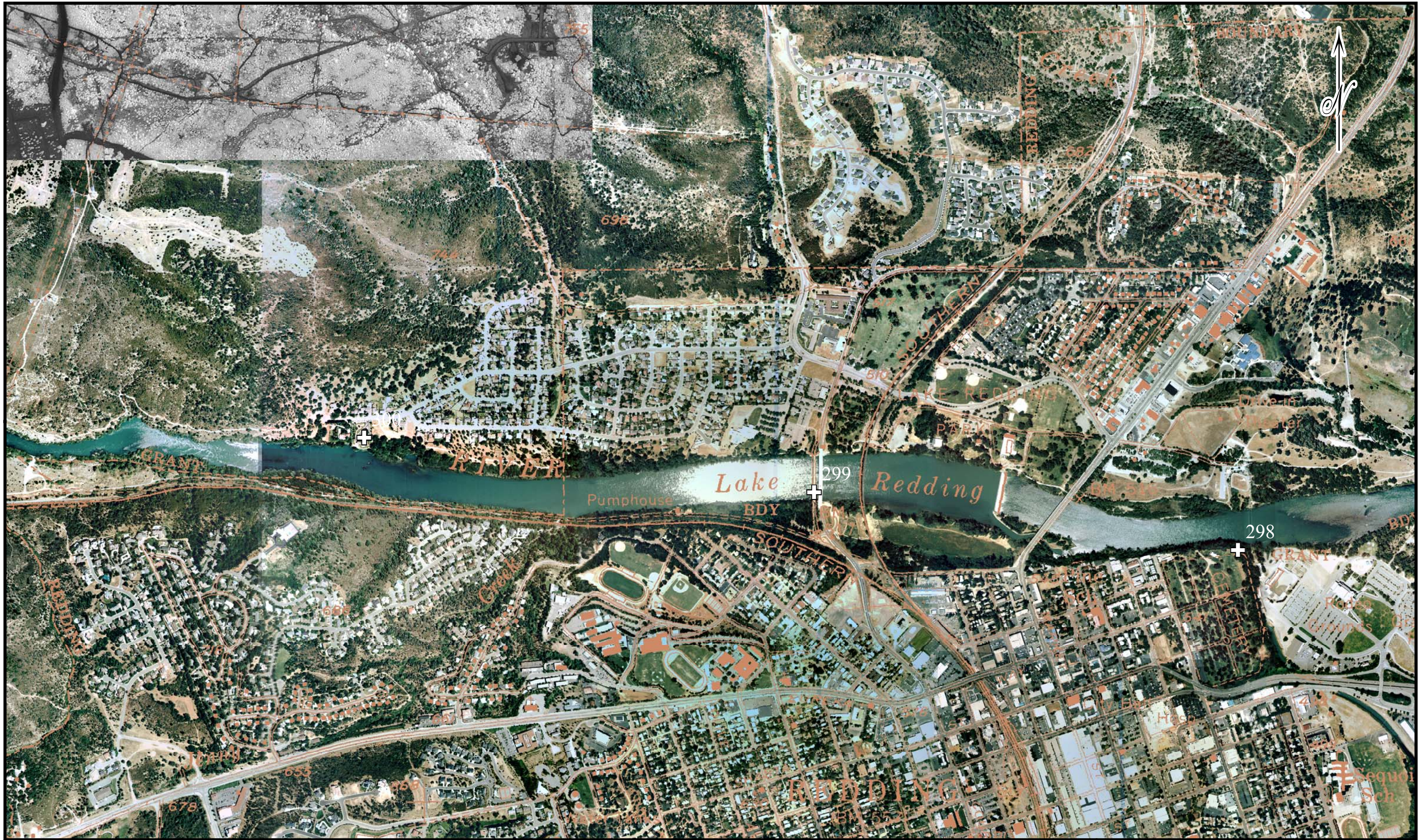
Digitized from 1991 Aerial Atlas


(Source: US Army Corps of Engineers, Sacramento District)

STATE OF CALIFORNIA
 THE RESOURCES AGENCY
 DEPARTMENT OF WATER RESOURCES
 NORTHERN DISTRICT

SACRAMENTO RIVER
 RED BLUFF (River Mile 243)
 TO
 KESWICK DAM (River Mile 302)

Data source: WR-BNE-C
 1999 1:7,200 Color Photos
 with a transparent DRG overlay

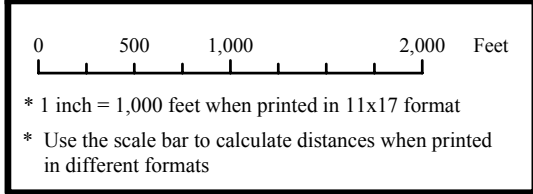
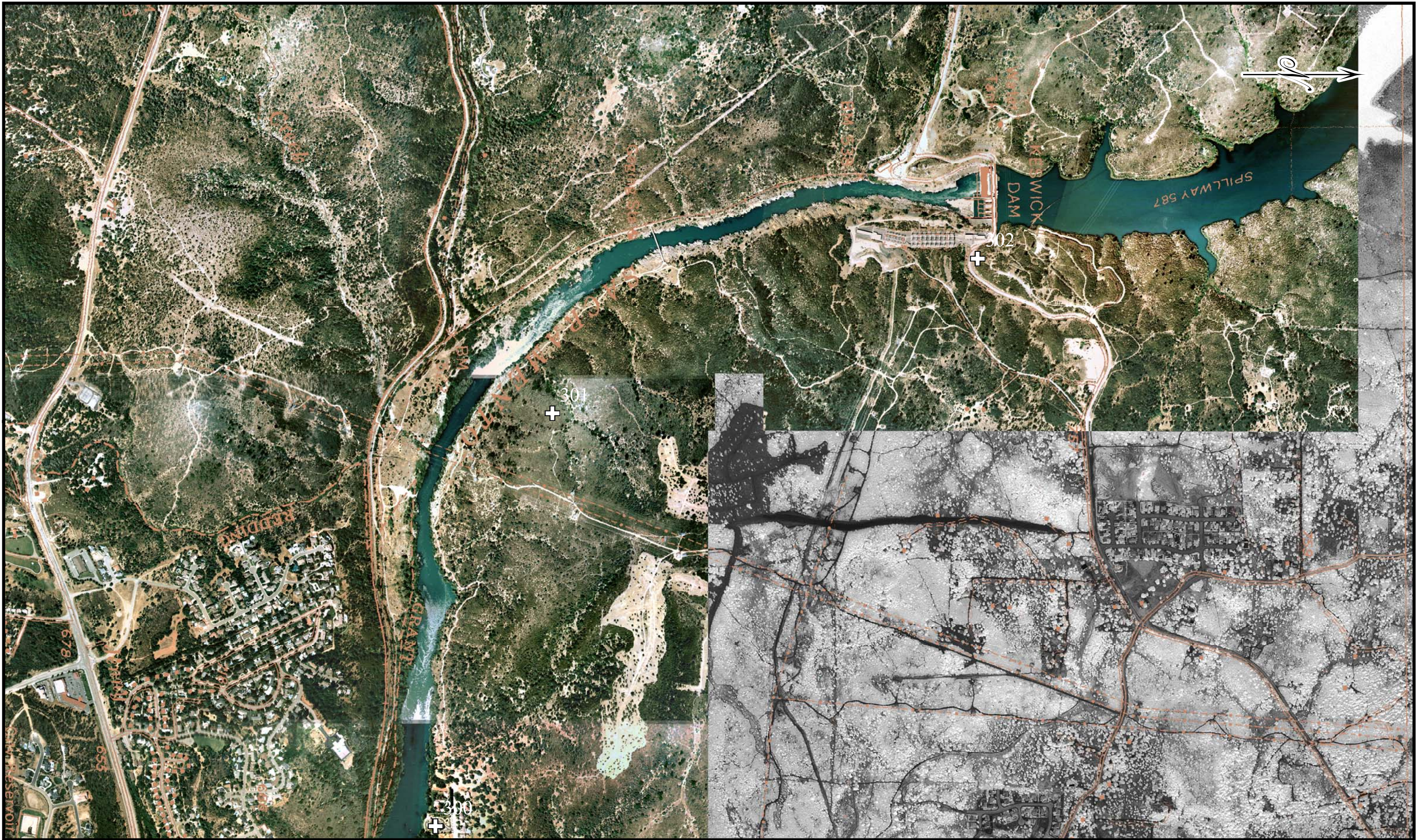


 **River miles**
 Digitized from 1991 Aerial Atlas
(Source: US Army Corps of Engineers, Sacramento District)

STATE OF CALIFORNIA
 THE RESOURCES AGENCY
 DEPARTMENT OF WATER RESOURCES
 NORTHERN DISTRICT

SACRAMENTO RIVER
 RED BLUFF (River Mile 243)
 TO
 KESWICK DAM (River Mile 302)

Data source: WR-BNE-C
 1999 1:7,200 Color Photos
 with a transparent DRG overlay



+ River miles
 Digitized from 1991 Aerial Atlas
(Source: US Army Corps of Engineers, Sacramento District)

STATE OF CALIFORNIA
 THE RESOURCES AGENCY
 DEPARTMENT OF WATER RESOURCES
 NORTHERN DISTRICT

SACRAMENTO RIVER
 RED BLUFF (River Mile 243)
 TO
 KESWICK DAM (River Mile 302)

Data source: WR-BNE-C
 1999 1:7,200 Color Photos
 with a transparent DRG overlay