

Kopta Slough Flood Damage Reduction and Habitat Restoration Project

March 12, 2015

PARC Meeting



2017 ROADMAP



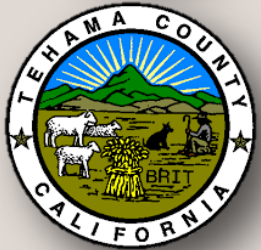
Chapt
er
1
Context

C V F P P

2017 ROADMAP



Project Partners



C V F P P

2017 ROADMAP

Kopta Slough Project & 2012 CVFPP Objectives

Flood Risk Management

Flood O & M

Ecosystem Functions

Multi-Benefit Project

Institutional Support

Improve Flood Risk Management Reduce the chance of flooding and damages once flooding occurs, and improve public safety, preparedness, and emergency response.



2017 ROADMAP



Kopta Slough Project & 2012 CVFPP Objectives

Flood Risk Management

Flood O & M

Ecosystem Functions

Multi-Benefit Project

Institutional Support

Improve Operations and Maintenance – Reduce systemwide maintenance and repair requirements by modifying the flood management systems in ways that are compatible with natural processes, and adjust, coordinate, and streamline regulatory and institutional standards, funding, and practices for O&M, including significant repairs.

C V F P P

2017 ROADMAP



Kopta Slough Project & 2012 CVFPP Objectives

Flood Risk Management

Flood O & M

Ecosystem Functions

Multi-Benefit Project

Institutional Support

Promote Ecosystem Functions – Integrate the recovery and restoration of key physical processes, self-sustaining ecological functions, native habitats, and species into flood management system improvements.



2017 ROADMAP



Kopta Slough Project & 2012 CVFPP Objectives

Flood Risk Management

Flood O & M

Ecosystem Functions

Multi-Benefit Project

Institutional Support

Promote Multi-Benefit Projects – Describe flood management projects and actions that also contribute to broader integrated water management objectives identified through other programs.

Kopta Slough Project & 2012 CVFPP Objectives

Flood Risk Management

Flood O & M

Ecosystem Functions

Multi-Benefit Project

Institutional Support

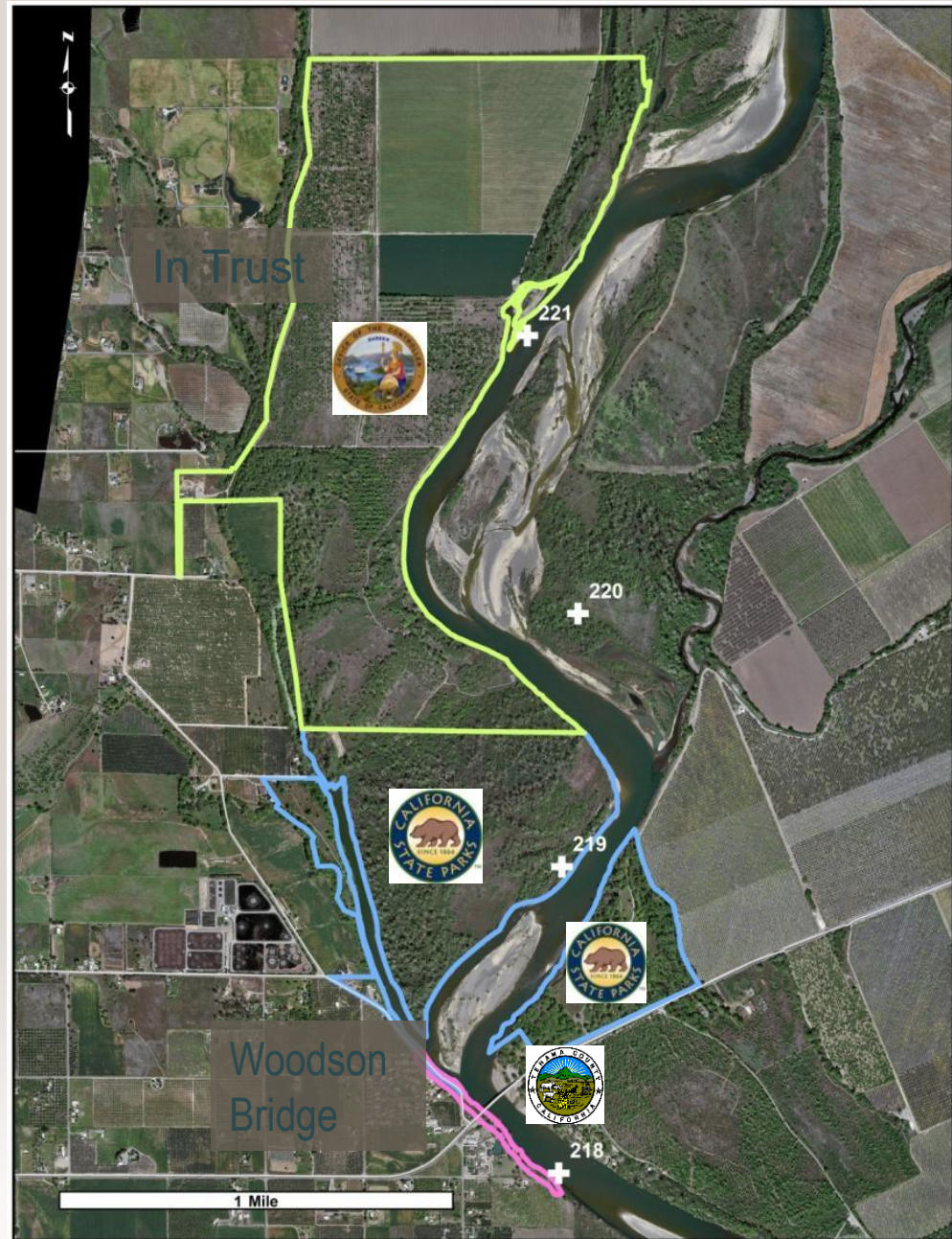
Improve Institutional Support – Develop stable institutional structures, coordination protocols, and financial frameworks that enable effective and adaptive integrated flood management (designs, O&M, permitting, preparedness, response, recovery, and land use, and development planning).



2017 ROADMAP



Kopta Slough Project Area

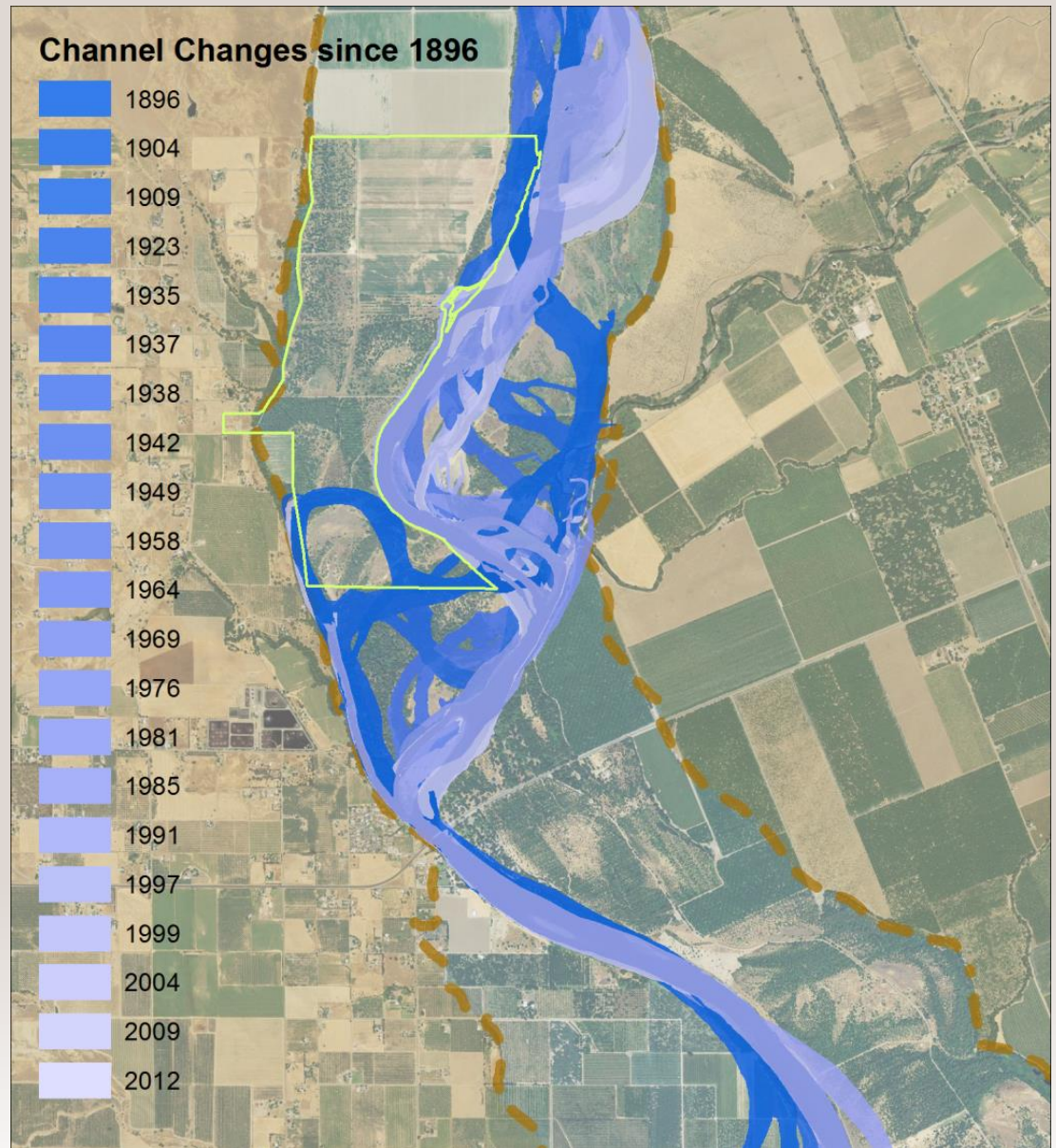


C V F P P

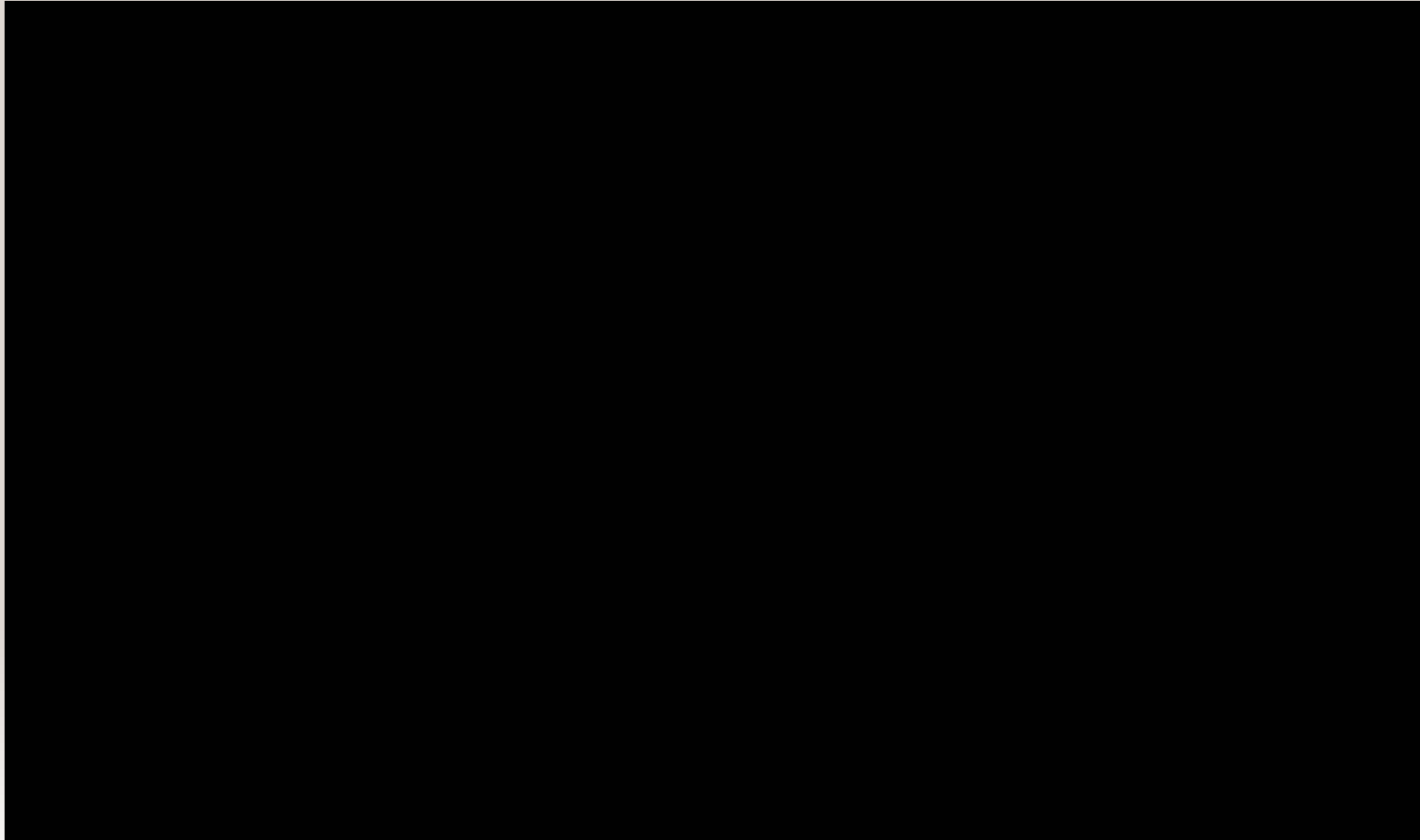
2017 ROADMAP



Sacramento River Meander Belt at Kopta Slough



Meander Belt -116 Year Animation



2017 ROADMAP



Project Objectives

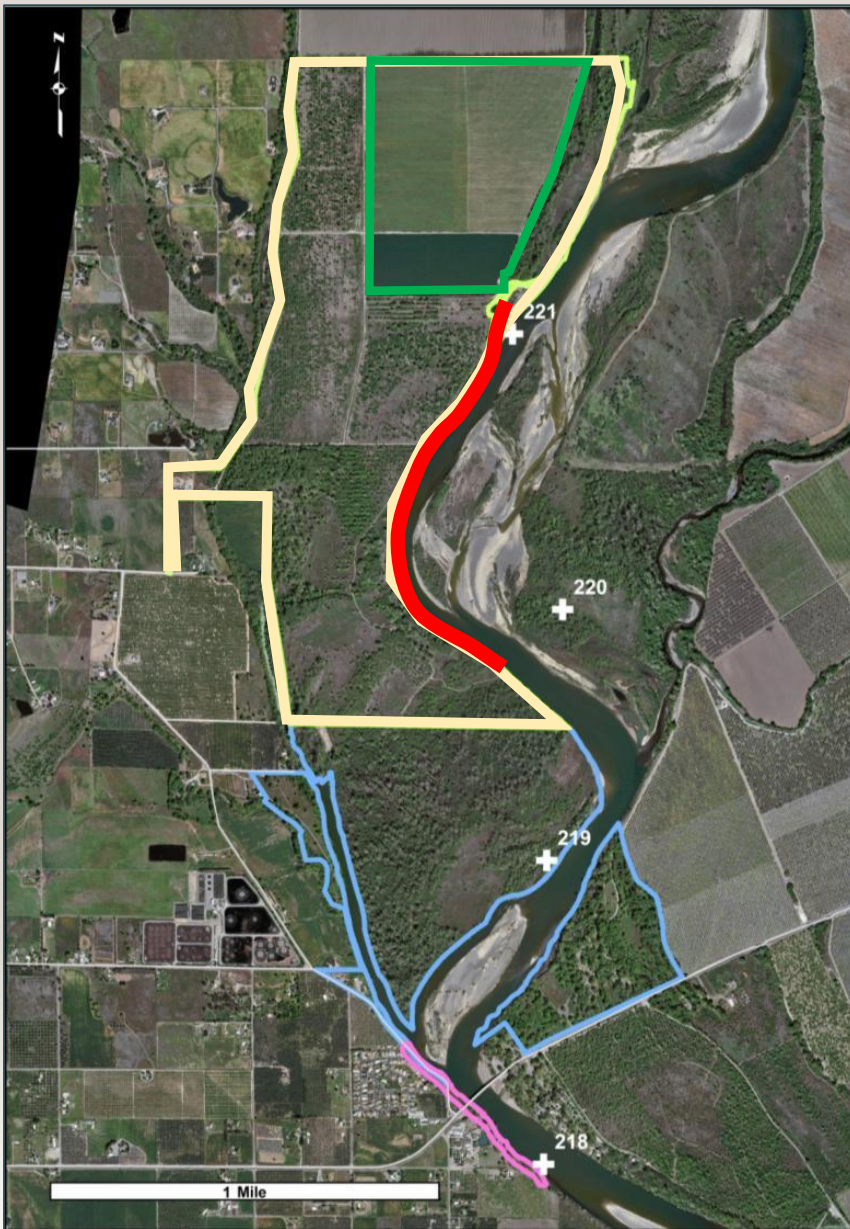
- Restore riparian habitat
- Restore hydrologic and geomorphic function
- Reduce flood management system O&M responsibilities
- Provide mitigation for flood management projects
- Reduce unwanted erosion and protect public resources and infrastructure
- Enhance recreation opportunities

Project Elements

Transfer ownership of the 658-acre Kopta Slough Property to a State or federal agency

Restore 176 acres of riparian habitat

Remove 5,600 linear feet of rock revetment



Important Issues to Resolve

- Complete environmental assessment/initial study
- Develop Kopta Slough mitigation strategy/plan for flood management projects
- Acquire land and determine long-term management

