



**State of California - The Resources Agency
DEPARTMENT OF PARKS AND RECREATION**

NOTICE OF PREPARATION

**Colusa-Sacramento River
State Recreation Area
General Plan
Draft Program Environmental Impact Report**

The California Department of Parks and Recreation (DPR) is the Lead Agency for the General Plan (Project) at Colusa-Sacramento River State Recreation Area (Park), as defined by the California Environmental Quality Act (CEQA). DPR is preparing a Draft Program Environmental Impact Report (Draft Program EIR) for the Project. We are inquiring about views of interested persons/agencies as to the scope and environmental requirements relevant to your concerns and/or agency's statutory responsibilities, in connection with the proposed Project. This Notice of Preparation (NOP) includes the Project Location, Project Description, and Possible Environmental Effects.

Project Location

The Park is located in Colusa County, along the Sacramento River in the Sacramento Valley, Latitude N 39.2144 and Longitude W -122.0083. It is approximately 68 miles northwest of Sacramento and is adjacent to and north of the City of Colusa (See Attachment 1, Location Map, and Attachment 2, Site Map). The Park is operated by DPR's Northern Buttes District, Valley Sector. DPR's Valley Sector offices are located at Bidwell Mansion State Historic Park, 525 Esplanade, Chico, California.

Project Description

A General Development Plan for the Park was adopted in 1957. A new General Plan (GP) is necessary to accurately reflect current land ownership, resources conditions, park management and potential opportunities. To determine appropriate uses, DPR will undergo a planning process which includes evaluating existing conditions and assessing current and potential uses.

DPR is preparing the Colusa-Sacramento River State Recreation Area General Plan in accordance with Public Resources Code Section 5002.2 referencing GP Guidelines and Section 20111 et seq. concerning CEQA. Consistent with the Public Resources Code, the GP will evaluate and define proposed land uses, facilities, concessions, operation of the unit, resources management, and any potential environmental impacts resulting from implementation of the GP. The GP will serve as the guide for future development, management and operation of the Park.

The Draft Program EIR will address planning issues, including, but not limited to, the following:

- Aesthetics
- Agricultural and Forest Resources
- Air Quality
- Biological Resources
- Cultural Resources
- Geology and Soils
- Greenhouse Gas Emissions
- Hazards and Hazardous Materials
- Hydrology and Water Quality
- Land Use and Planning
- Noise
- Public Services
- Recreation
- Transportation and Traffic
- Utilities and Service Systems

Possible Effects and Reduction Techniques

The Draft Program EIR will evaluate the potential environmental impacts resulting from implementation of the proposed GP. The Project will incorporate standard reduction techniques to reduce potential impacts. Where appropriate and feasible, GP policies and BMPs will be used to minimize project impacts. The Draft Program EIR's Project Description and impact evaluations will provide a detailed discussion of these techniques, but for the purposes of this NOP, the following are some, but not all, possible effects, reduction techniques, and mitigations:

Aesthetics: Implementation of the GP may result in impacts to the visual character of the site. Reduction techniques may include screened staging areas for equipment, limiting construction to off-peak times, and developing GP policies that provide design and landscaping guidelines for future facilities.

Agricultural and Forest Resources: The Project is located adjacent to active agricultural areas. These areas will be evaluated for impacts and reduction techniques will be provided in the Draft Program EIR.

Air Quality: Implementation of the GP may result in impacts to local air quality through creation of fugitive dust and equipment emissions during construction and increase in traffic. Reduction techniques will be provided in the Draft Program EIR.

Biological Resources: Implementation of the GP may result in impacts to plant and wildlife species and sensitive habitat at the Project site. Reduction techniques may include identification and monitoring to avoid disrupting sensitive species and habitat.

Cultural Resources: Implementation of the GP could impact cultural resources, which may be discovered in the project vicinity. Reduction techniques may include identification and recordation, capping, signage, and monitoring for avoidance of cultural resources.

Geology and Soils: Implementation of the GP may result in soil disturbance due to construction and operation of new facilities. Reduction techniques will be included in the Draft Program EIR.

Greenhouse Gas Emissions: Implementation of the GP may result in an increase greenhouse gas emissions due to increased traffic and construction activities associated with future facilities. Reduction techniques may include vehicle trip reduction strategies.

Hazards and Hazardous Materials: A portion of the Project site is located on a former dump site and unearthing hazardous materials is a possibility during project development. Reduction techniques will be included in the Draft Program EIR.

Hydrology and Water Quality: Grading and excavation associated with implementation of the GP may release surface material into the Sacramento River. Reduction techniques will be included in the Draft Program EIR.

Land Use and Planning: The Project will be analyzed to determine consistency with local, state, and federal plans and policies. Reduction techniques will be included in the Draft Program EIR.

Noise: Construction activities and increased recreation activities may impact noise levels. Reduction techniques may include restricting construction activities to 7:00 a.m. – 5:00 p.m., Monday through Saturday and locating future facilities away from any sensitive receptors.

Public Services: Implementation of the GP may result in an increased demand for public services including police and fire protection. Reduction techniques will be included in the Draft Program EIR.

Recreation: Project construction may temporarily disrupt or limit access to trails and recreational facilities. Reduction techniques will be included in the Draft Program EIR.

Transportation and Traffic: Project construction and implementation will result in temporary and permanent increases in traffic. Reduction techniques may include developing a Traffic Control Plan, scheduling trips to avoid peak traffic times, and posting notices of pending construction.

Utilities and Service Systems: Implementation of the GP may result in increase in the need for services including water, wastewater, and electricity. Reduction techniques will be included Draft Program EIR.

Opportunities for Public and Agency Participation related to this NOP

A planning workshop has been scheduled to provide additional information about the proposed project and to give interested parties an opportunity to comment on the scope and potential environmental effects of the project. The workshop will be held at the following time and location:

Thursday, June 19, 2014 6:00 to 8:00 PM
Colusa Boy Scout Cabin
901 Parkhill Street
Colusa, CA

Responses to this NOP

Due to the time limits mandated by State law, responses must be submitted to the address provided below no later than thirty (30) calendar days after this notice is filed with the Governor's Office of Planning and Research/State Clearinghouse (date)

Review Period: Tuesday, June 17, 2014 through July 17, 2014

Please include the full name, telephone number with area code, and email address of a contact person with each submittal.

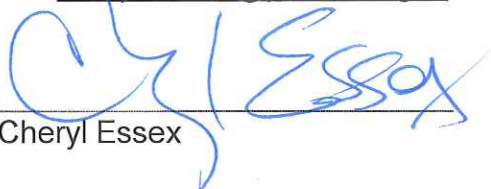
Submit Comments To:

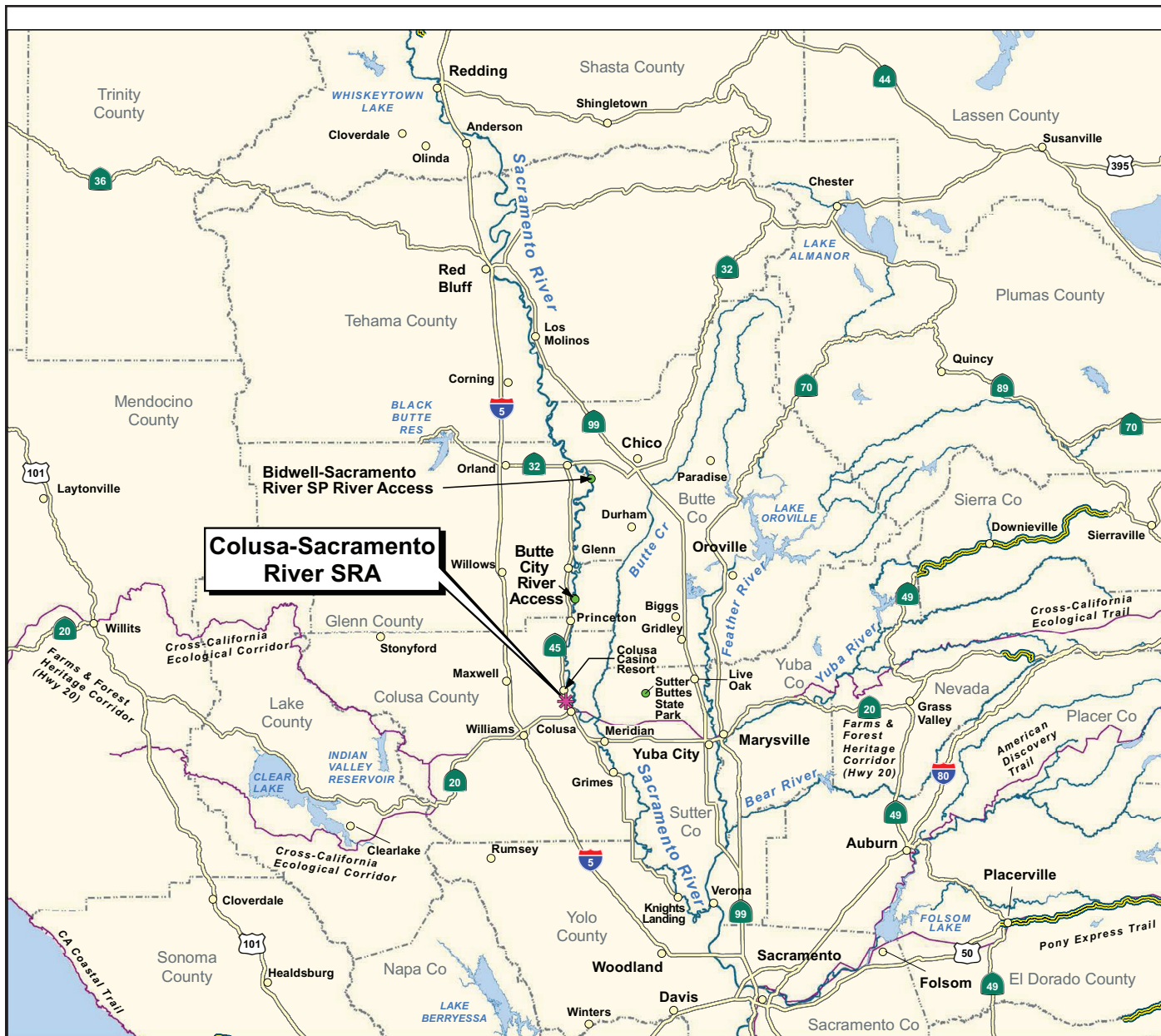
California State Parks

Attn: Cheryl Essex
Acquisition and Development Planning Section
One Capitol Mall, Suite 410
Sacramento, CA 95814
(916) 445-8814 cheryl.essex@parks.ca.gov

Signature: _____

Cheryl Essex

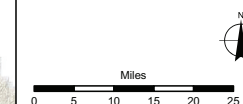




Legend

- Colusa-Sacramento River SRA
- Other selected State Parks
- Sacramento R. and Selected Tributaries
- County Boundaries
- California Recreational Trails System
- Scenic Highways
- Highways
- Selected Location Names

Map Location, showing Sacramento R. watershed (black outline) and the Sacramento R. Conservation Area (dark olive shading)



NOTES:

Parcel boundaries are approximate and should not be considered legal descriptions. Maps are intended for study purposes only.

Source: CA State Parks, 2014



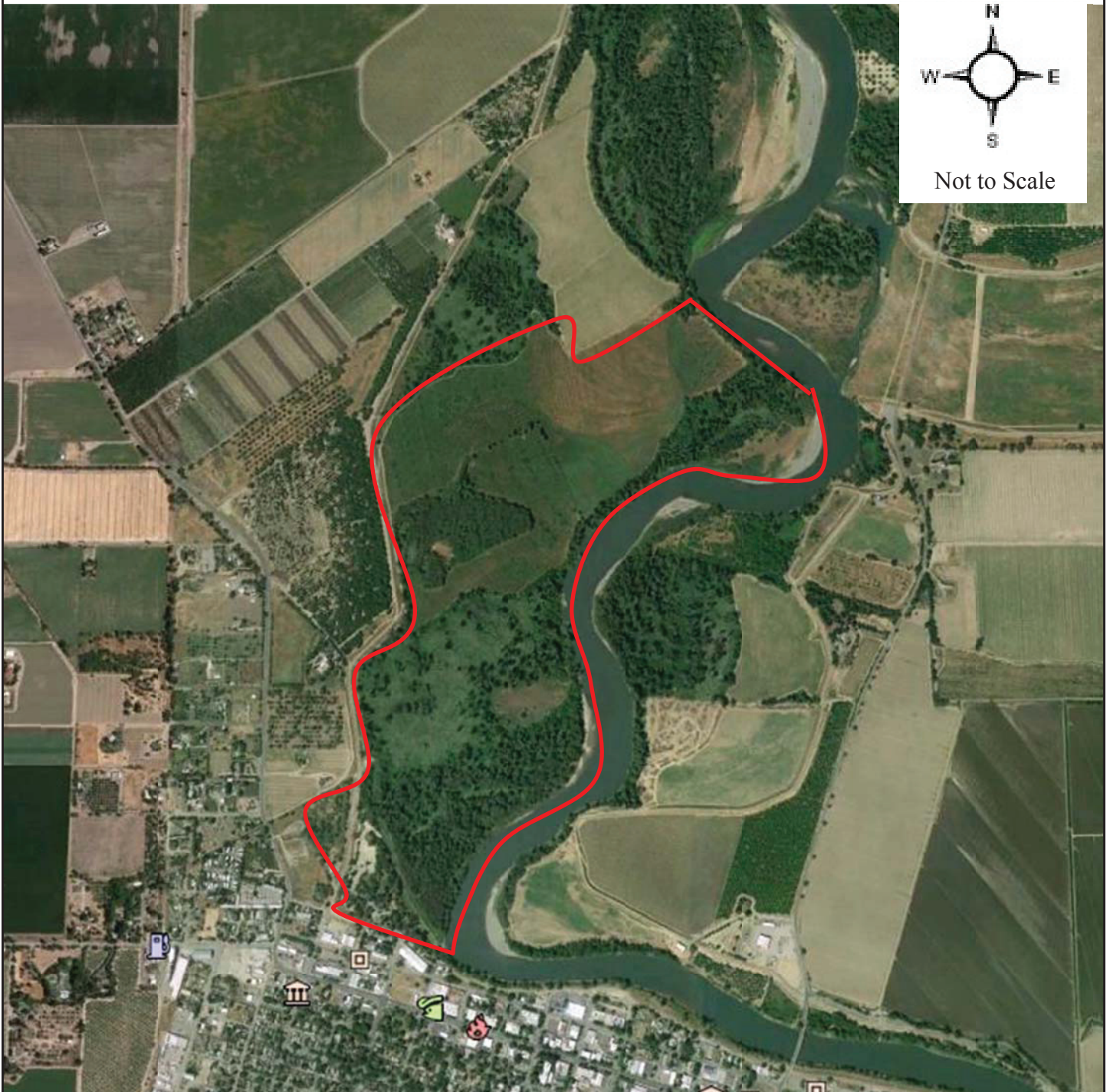
Location Map

June 2014

Colusa State Recreation Area General Plan EIR
Notice of Preparation

Attachment

1



Source: CA State Park, 2014



Site Map

June 2014

Colusa State Recreation Area General Plan EIR
Notice of Preparation

Attachment

2