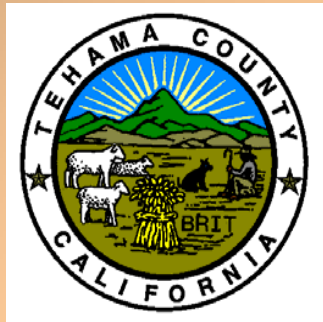


The Kopta Slough Flood Protection and Habitat Restoration Project

Public Information Meeting

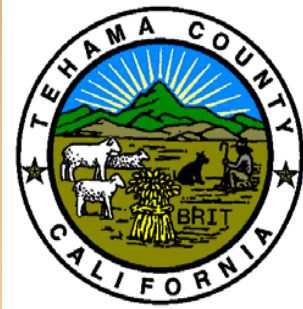
January 24, 2008



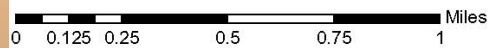
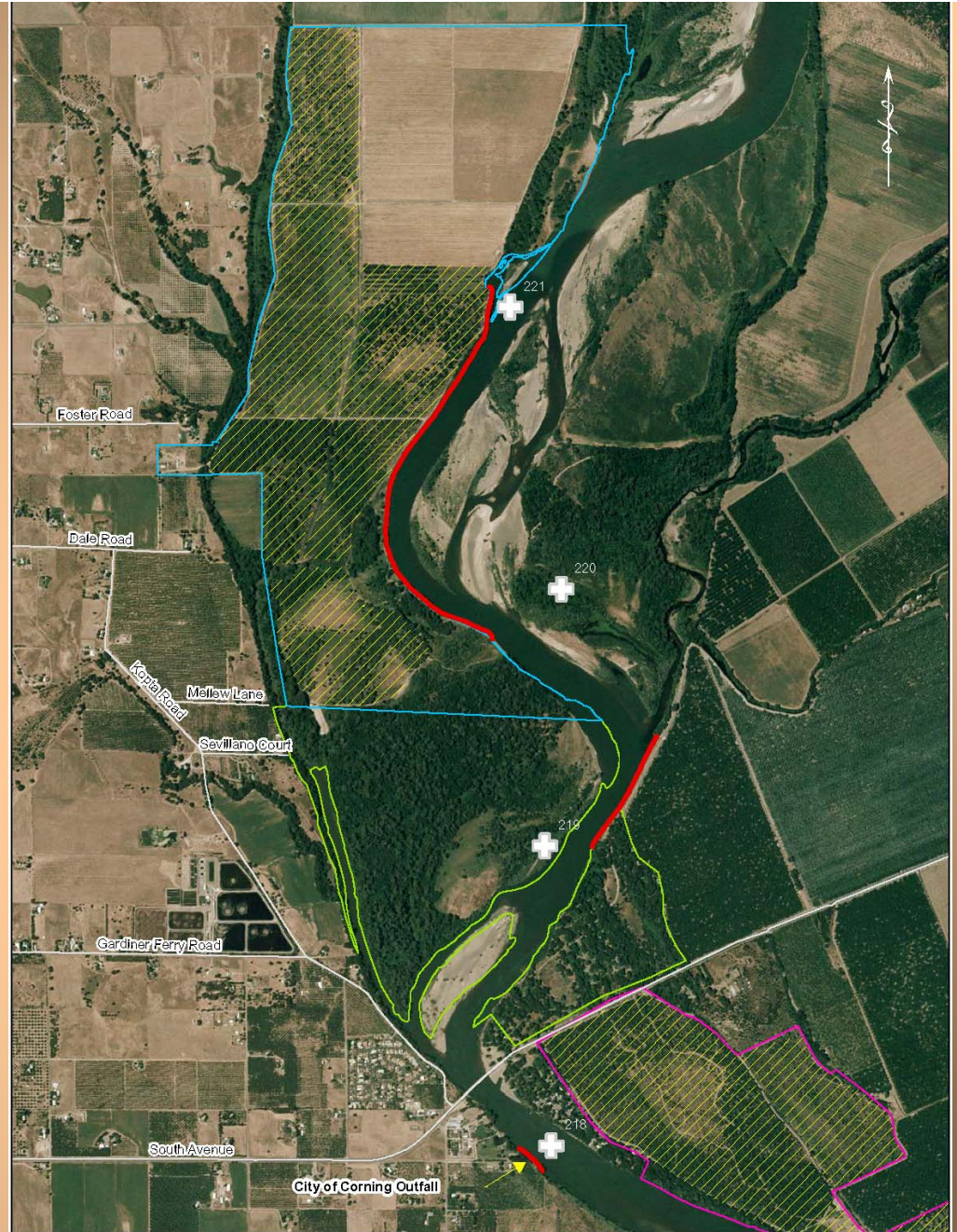
The Nature Conservancy



Protecting nature. Preserving life.™



sacramento river
conservation area
forum
a voice for all interests



Legend	
	River Mile Markers
	Roads
	Bank Protection
	ICP study area
	US Fish and Wildlife Land
	California Department of Parks and Recreation Land
	Currently in Restoration



Project Goals

- 1) Provide flood damage reduction benefits through reduced bank erosion to protect public resources
- 2) Provide advance mitigation credits for projects on State-maintained Central Valley Flood Control facilities
- 3) Provide ecosystem benefits through the restoration of natural fluvial and floodplain processes
- 4) Establish long term public ownership of the Kopta Slough property to protect public trust resources
- 5) Expand recreational opportunities for the people of the State of California on a portion of the project area, including camping, hiking, picnicking, and equestrian use

Implement Project Elements to Accomplish Goals

- 1) Protect the west abutment of Tehama County's Woodson Bridge and the City of Corning sewer outfall
- 2) Reduce the erosion rate along the southeast riverbank of the Woodson Bridge State Recreation Area
- 3) Restore 176 acres of mixed riparian forest habitat on the Kopta Slough property as mitigation for DWR Flood Control Projects
- 4) Remove unnecessary revetment along 5,600 feet of the riverbank at the Kopta Slough property and explore options for a pilot channel
- 5) Transfer the 708-acre Kopta Slough property from the California State Controller Environmental Trust to the State of California for management by California State Parks

Why are we here?

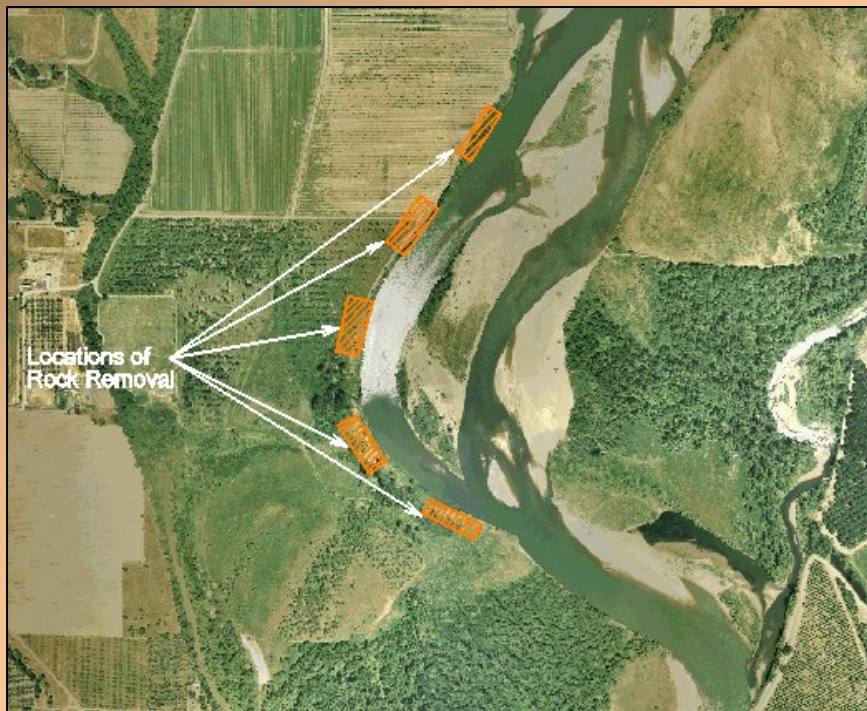
In the Spring of 2007, local project partners approached DWR with the idea of funding the project under the new flood initiatives under proposition 1E and 84.

The project appears to be consistent with the multiple objectives that DWR seeks to accomplish under its FloodSafe program.

DWR's management will be making the decision in the near future whether or not to move forward with the feasibility study.

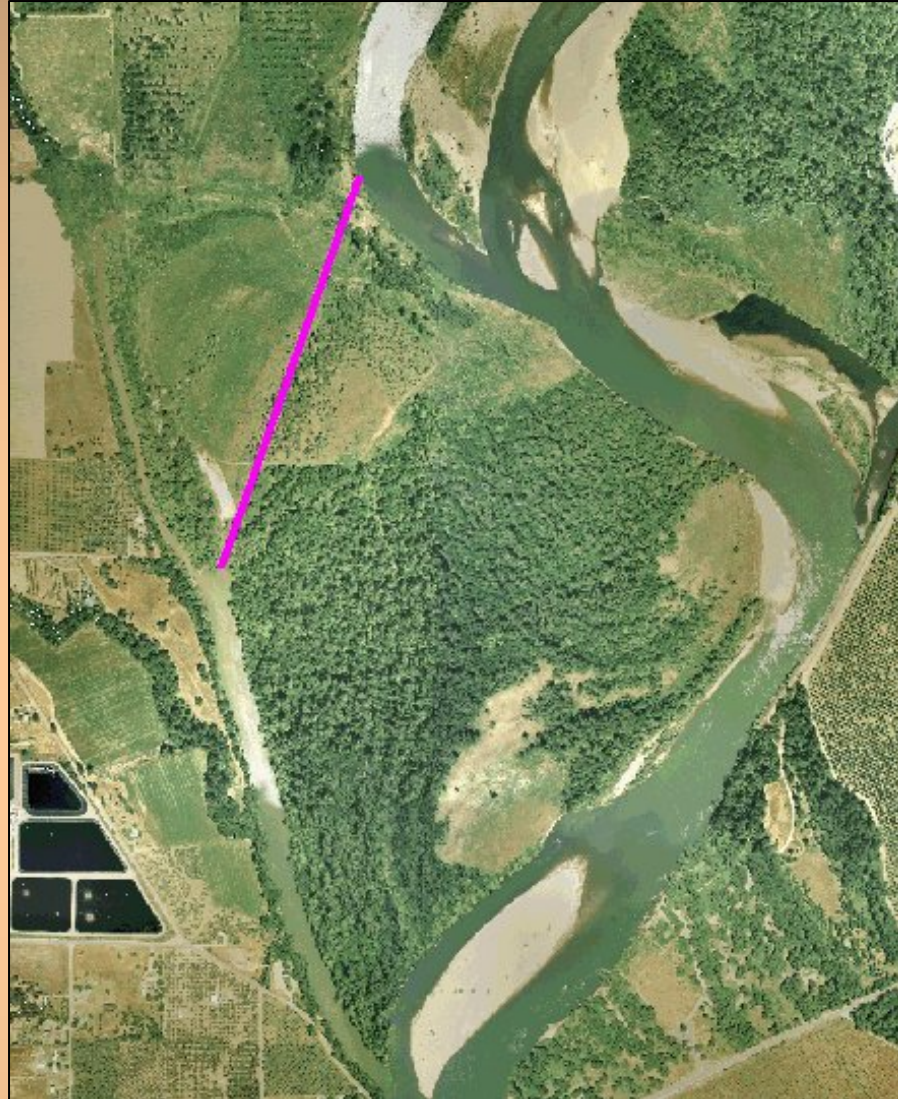


Project Elements
Removal of Revetment
Partial and Full Removal Alternatives

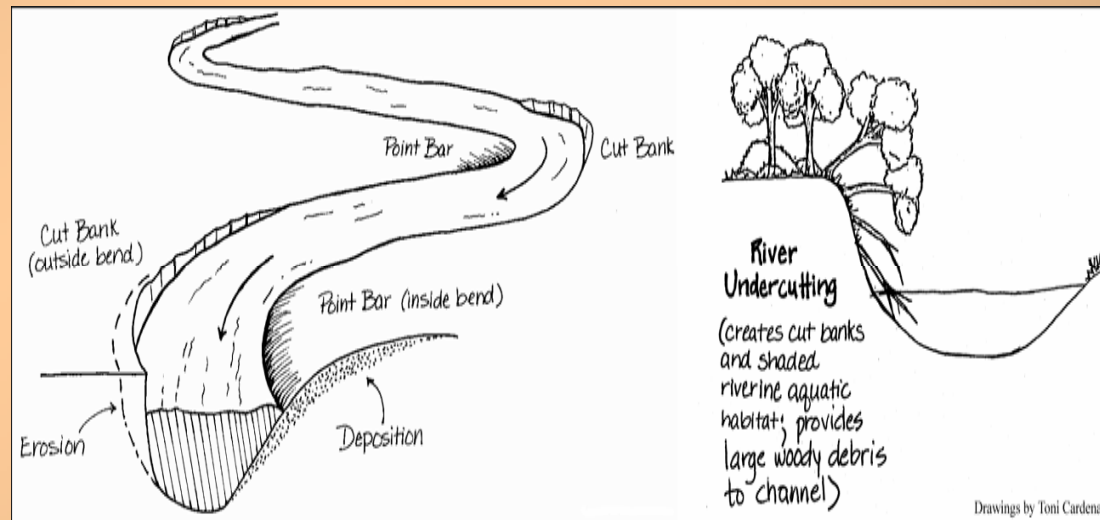
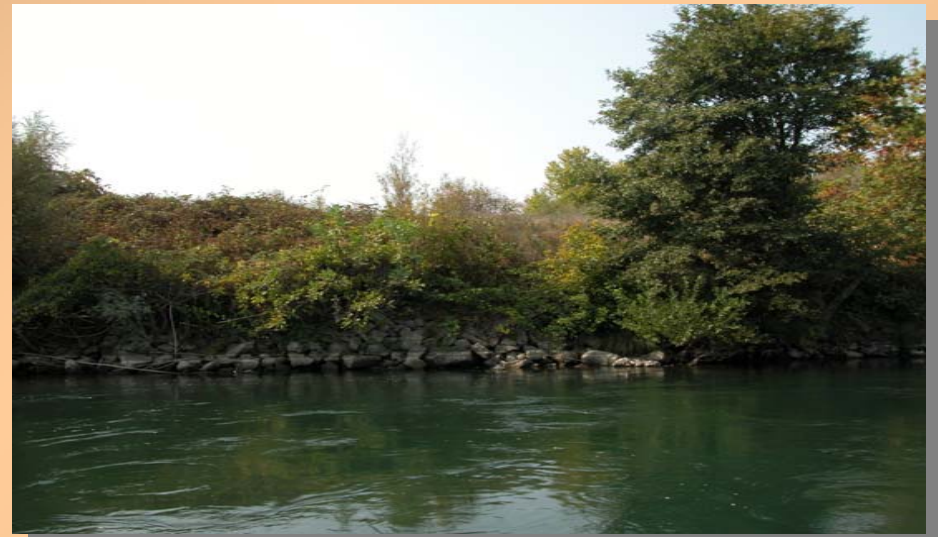


Project Elements

Alternatives for Pilot Channel Connecting Upper Kopta Slough

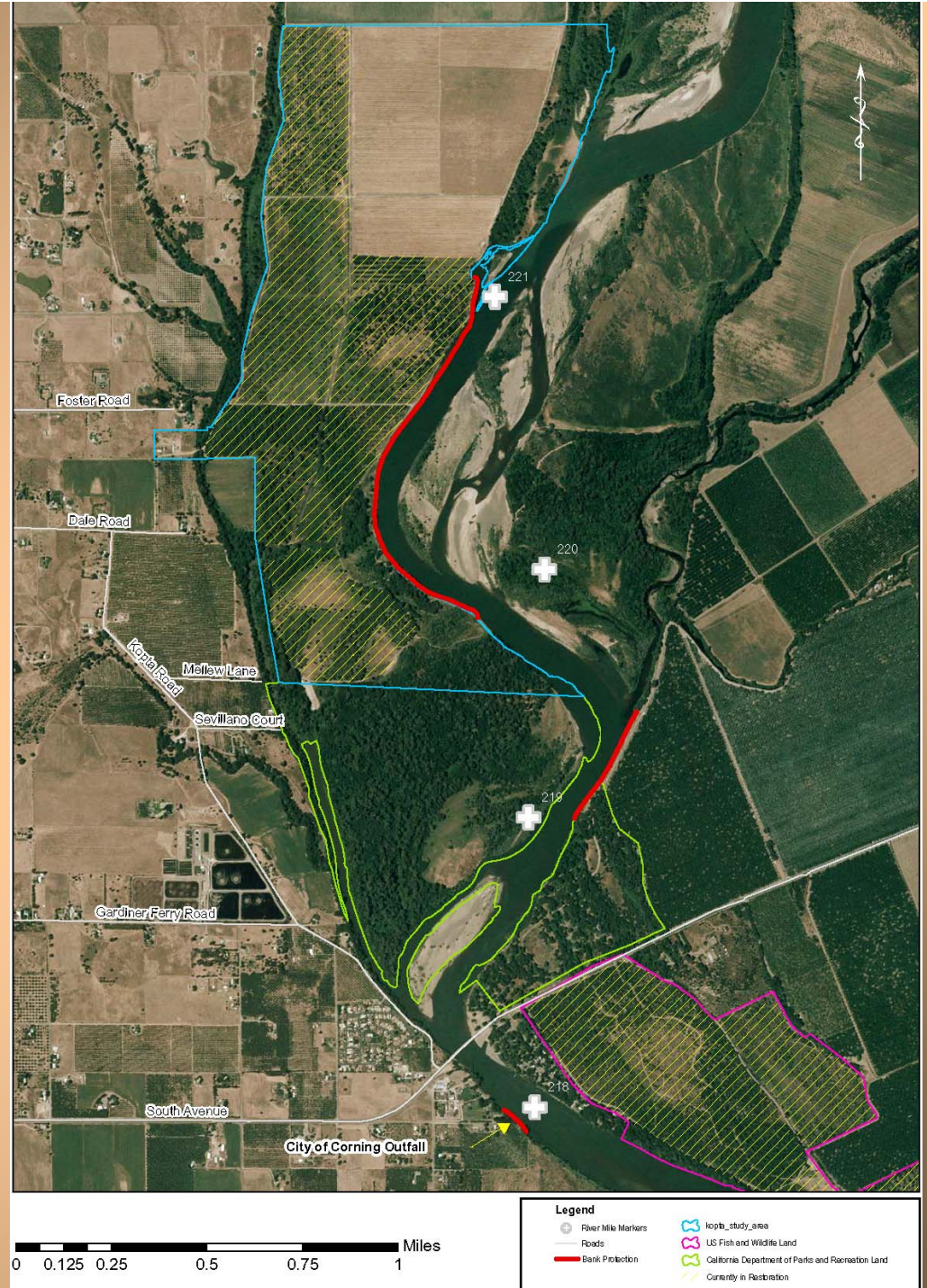


Goal: Reduce Erosion at Woodson Bridge State Park and Provide Ecosystem Benefits



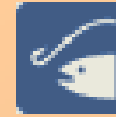
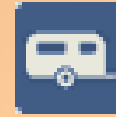
Project Elements

- Transfer the 708-acre Kopta Slough property from the California State Controller Environmental Trust to the State of California for management by California State Parks
- Restore 176 acres of mixed riparian forest habitat on the Kopta Slough property



Goal:

- Protect public trust resources and expand recreational opportunities, including camping, hiking, picnicking, and equestrian use
- Provide advance mitigation credits for projects on State-maintained Central Valley Flood Control facilities



Project Elements

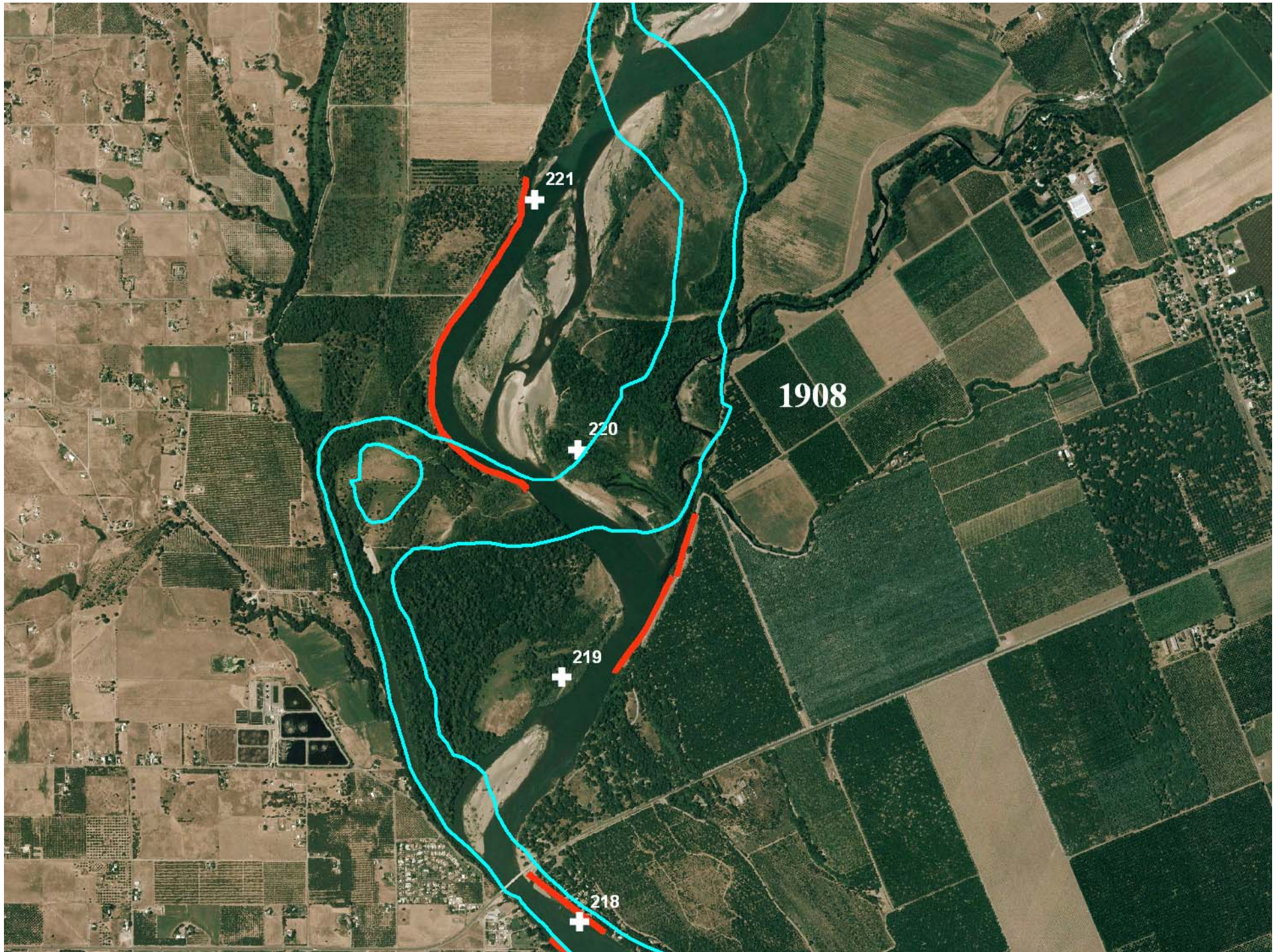
Protect West Abutment of Woodson Bridge and City of Corning Sewer Outfall

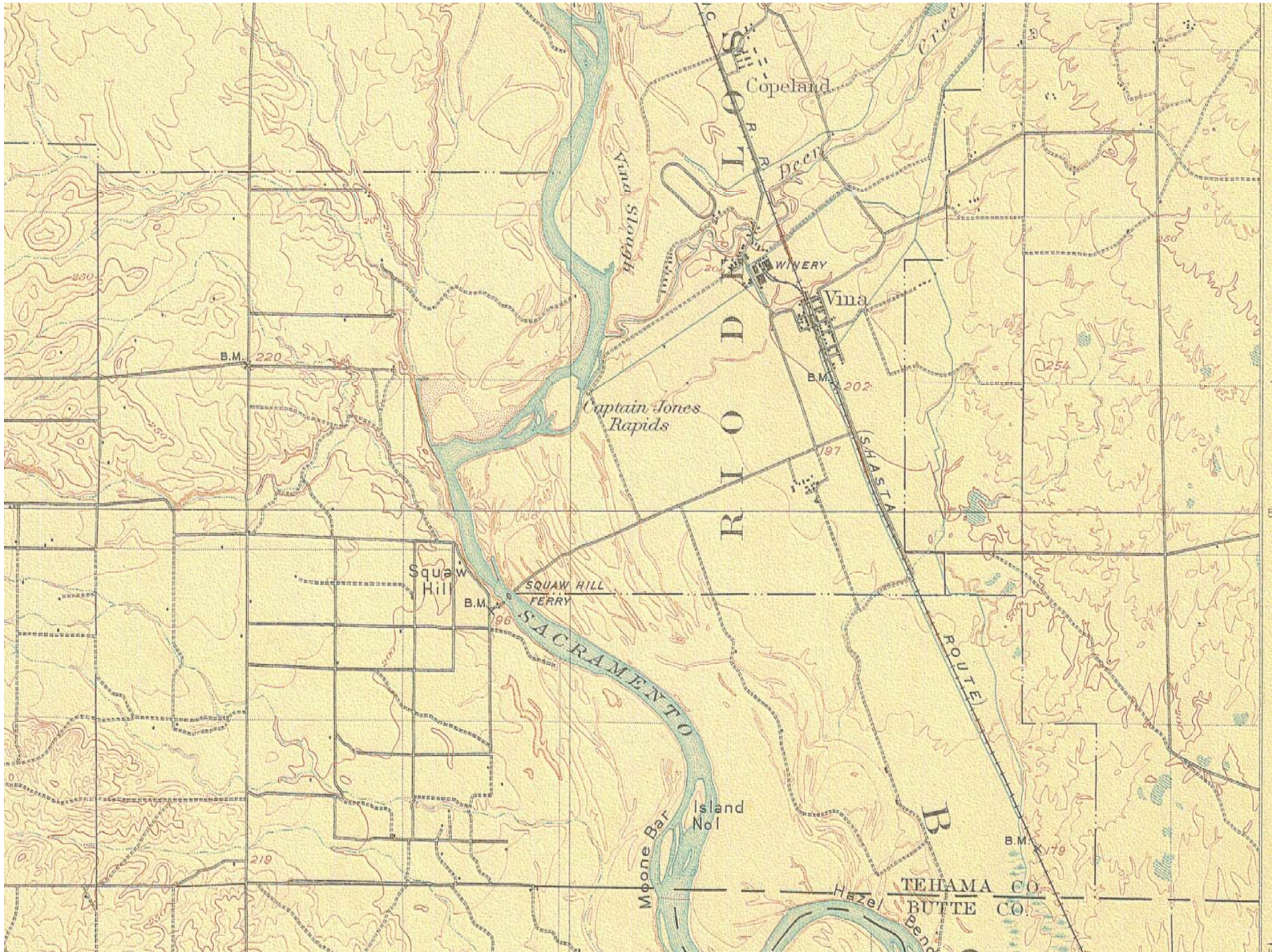


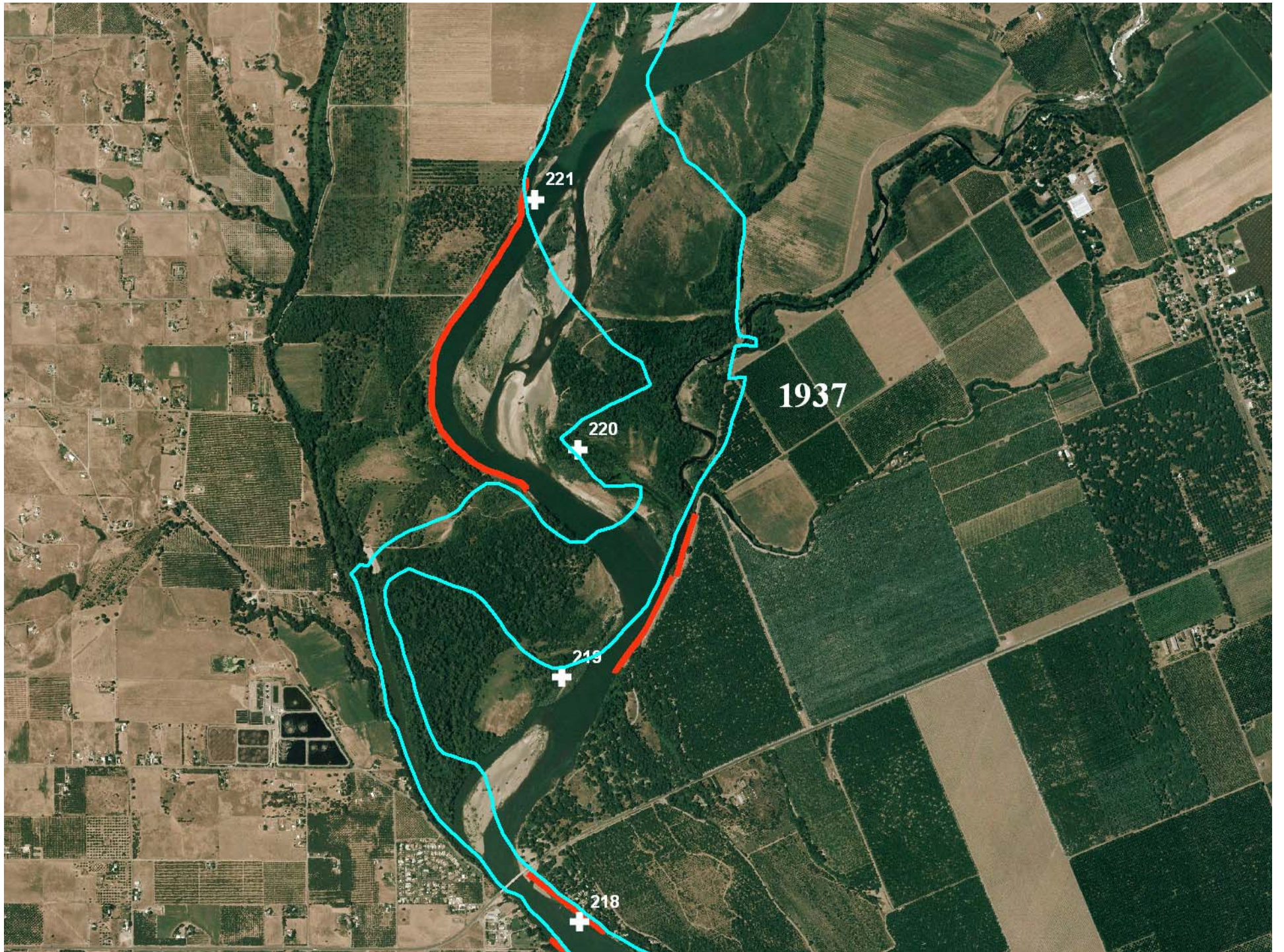
Goal:

Provide flood damage reduction benefits through reduced bank erosion to protect public resources





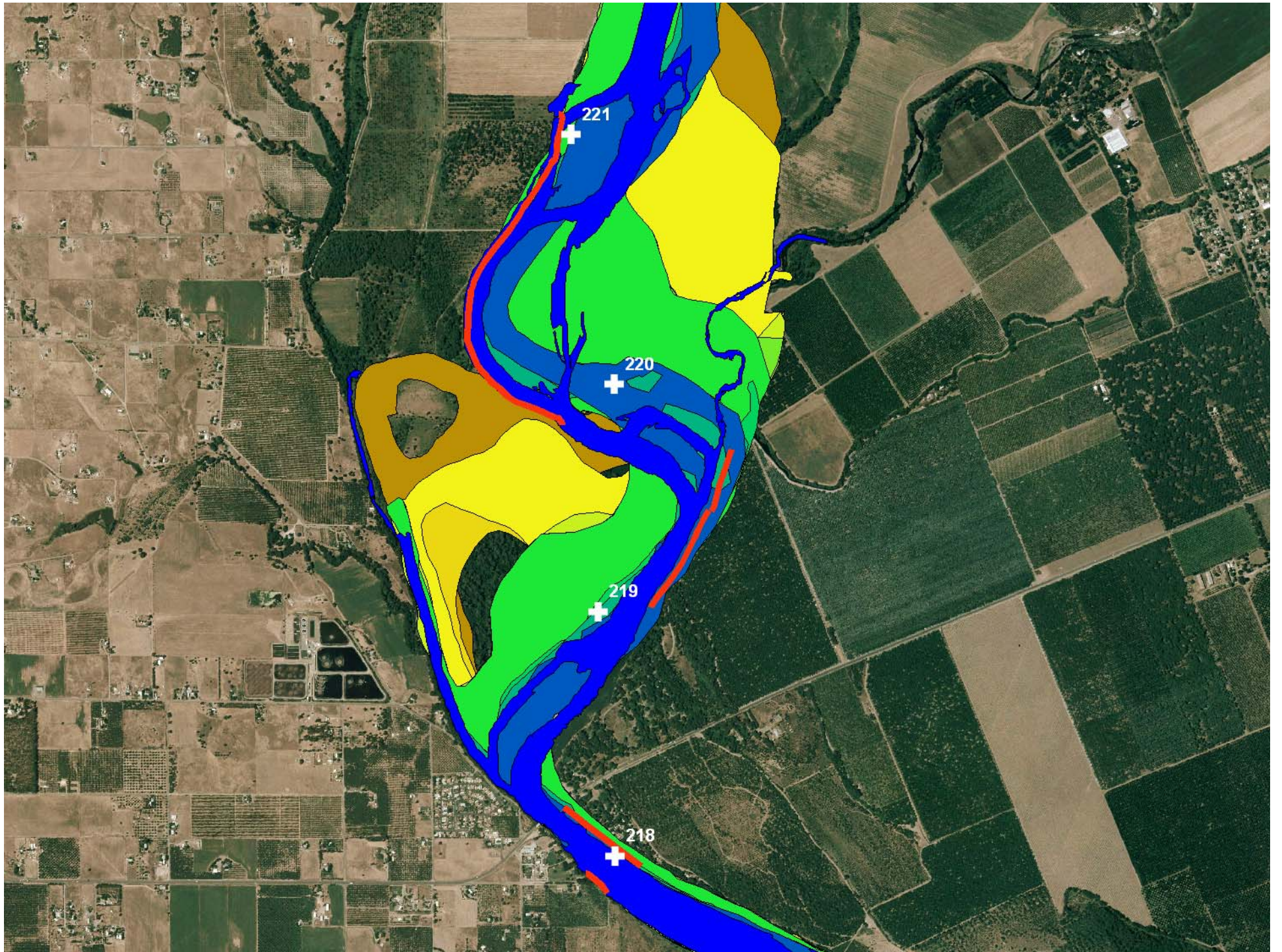


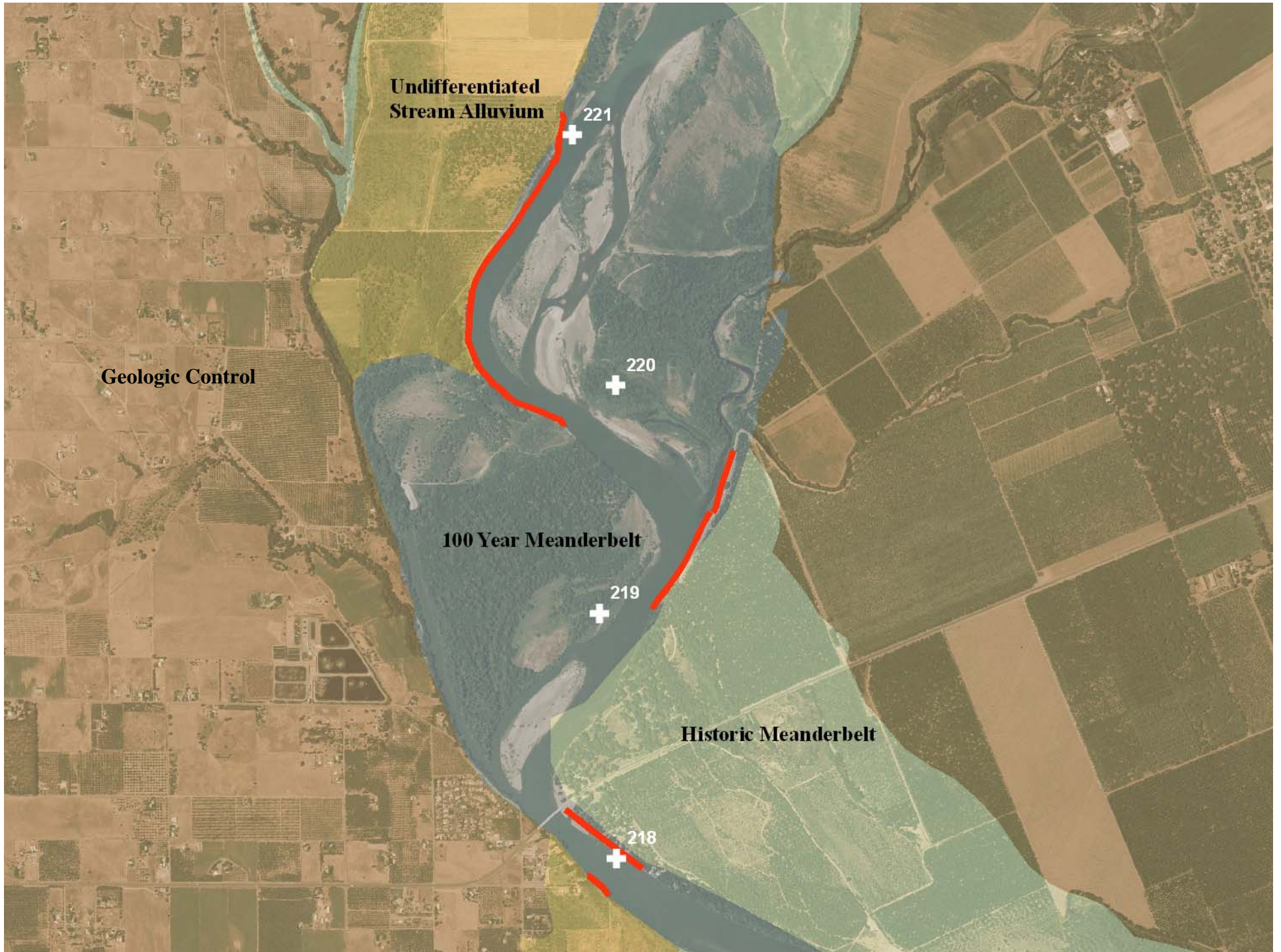


9-13-38

AXC-93-45







25 Year
Erosion Projection

221
+

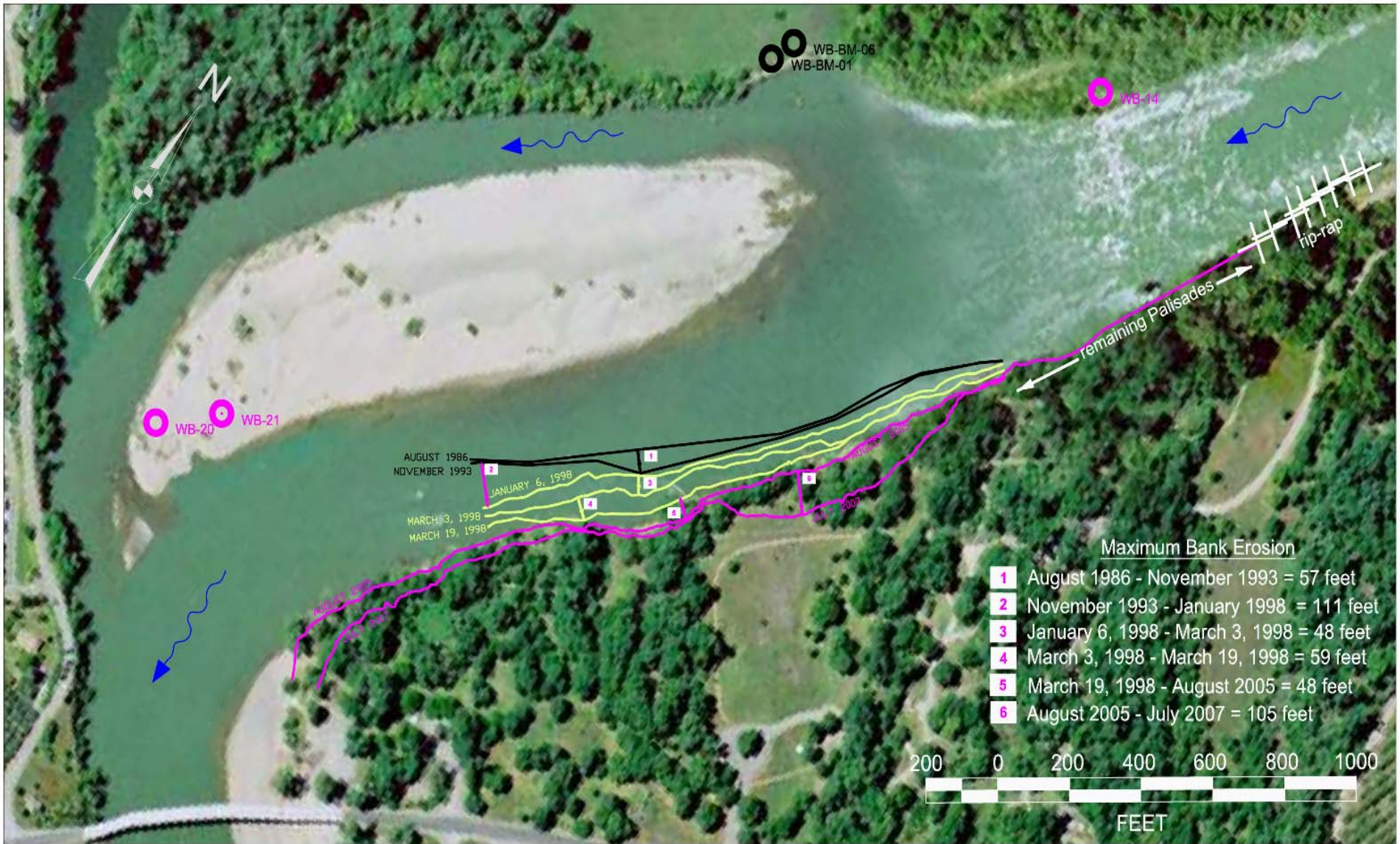
50 Year
Erosion Projection

220
+

219
+

218
+





Maximum Bank Erosion

- 1** August 1986 - November 1993 = 57 feet
- 2** November 1993 - January 1998 = 111 feet
- 3** January 6, 1998 - March 3, 1998 = 48 feet
- 4** March 3, 1998 - March 19, 1998 = 59 feet
- 5** March 19, 1998 - August 2005 = 48 feet
- 6** August 2005 - July 2007 = 105 feet

LEGEND

- 1986 - 1997 erosion prior to removal of Palisades
- 1997 - 2007 erosion after removal of Palisades
- 1997 - 1998 erosion during high flow event
- WB-BM-01 old DWR control points for theodolite surveys
- WB-21 new DWR control points for SET3 surveys

NOTES

- 1) The aerial photography base is 2005 AirPhoto USA (<http://www.airphotousa.com>)
- 2) Control points set by DWR-Geology in 1986, 2005 and 2007 consist of concrete and pipe capped and centerpunched, then GPS'd with a Geoinformatics RTK total station. Coordinates obtained are accurate plus/minus 0.1 feet.
- 3) From 1986 - 2000 the surveys were performed with a theodolite from DWR control. From 2000 - 2005 the surveys were performed with a Trimble GPS (accuracy +/- 5 feet). From 2005 - present the surveys have been performed from new real-world DWR control points and a SET3 total station. Bank edge points were selected wherever there were significant vertical or horizontal changes.

STATE OF CALIFORNIA
DEPARTMENT OF WATER RESOURCES
NORTHERN DISTRICT

Sacramento River Bank Erosion Study

Woodson Bridge Erosion Site
River Mile 218.4 - 219.0
Bank Erosion Surveys
1986 - 2007



Prepared by:
Dave Forrester

Date:
1/24/08

Filename:
Woodson SET3 Surveys2 01-24-08.dwg

March 1995



February 20, 2004



Project Partner's Perspective



Questions and Comments from the Audience

