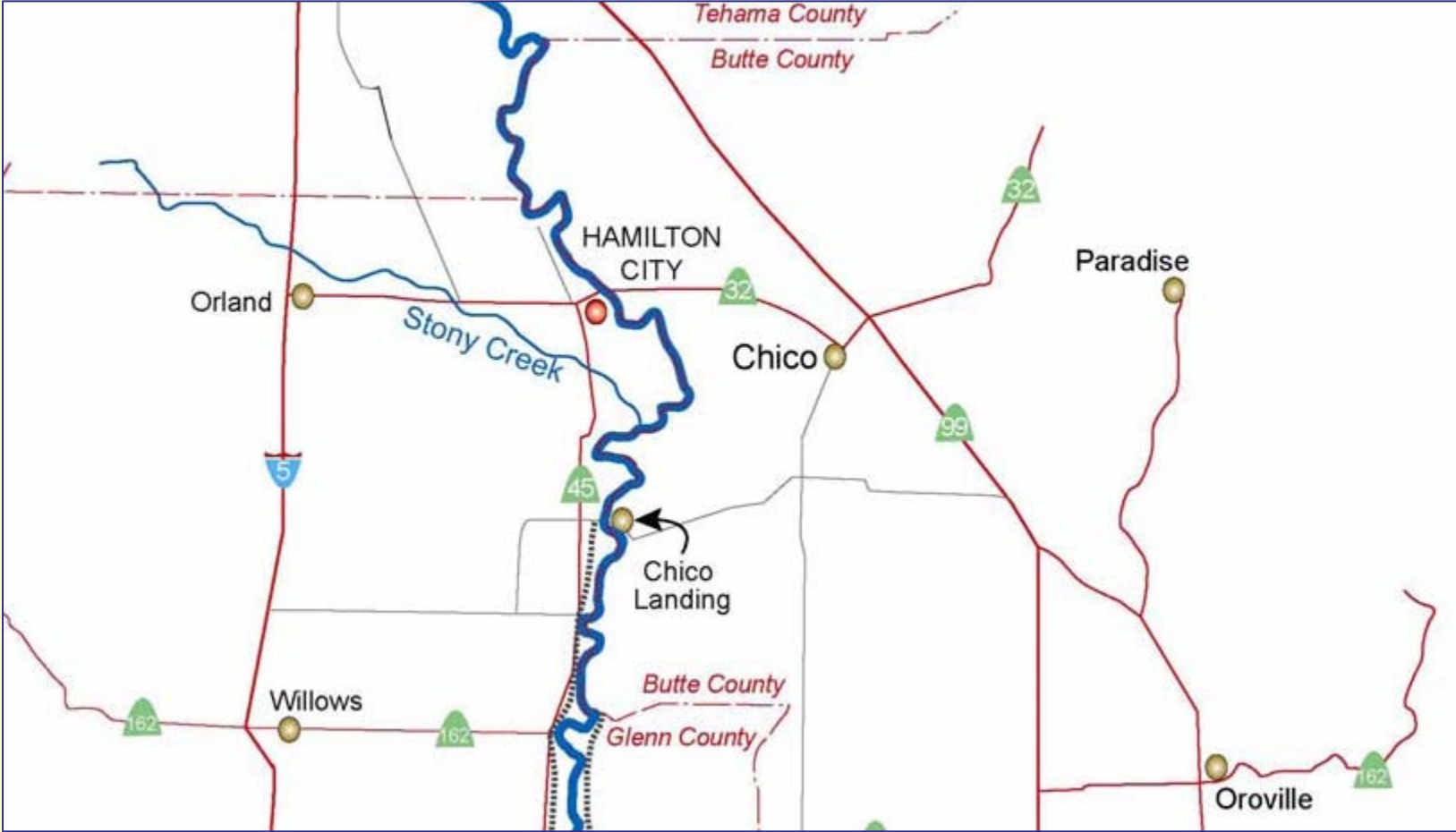


HAMILTON CITY FLOOD DAMAGE REDUCTION AND ECOSYSTEM RESTORATION PROJECT



HAMILTON CITY

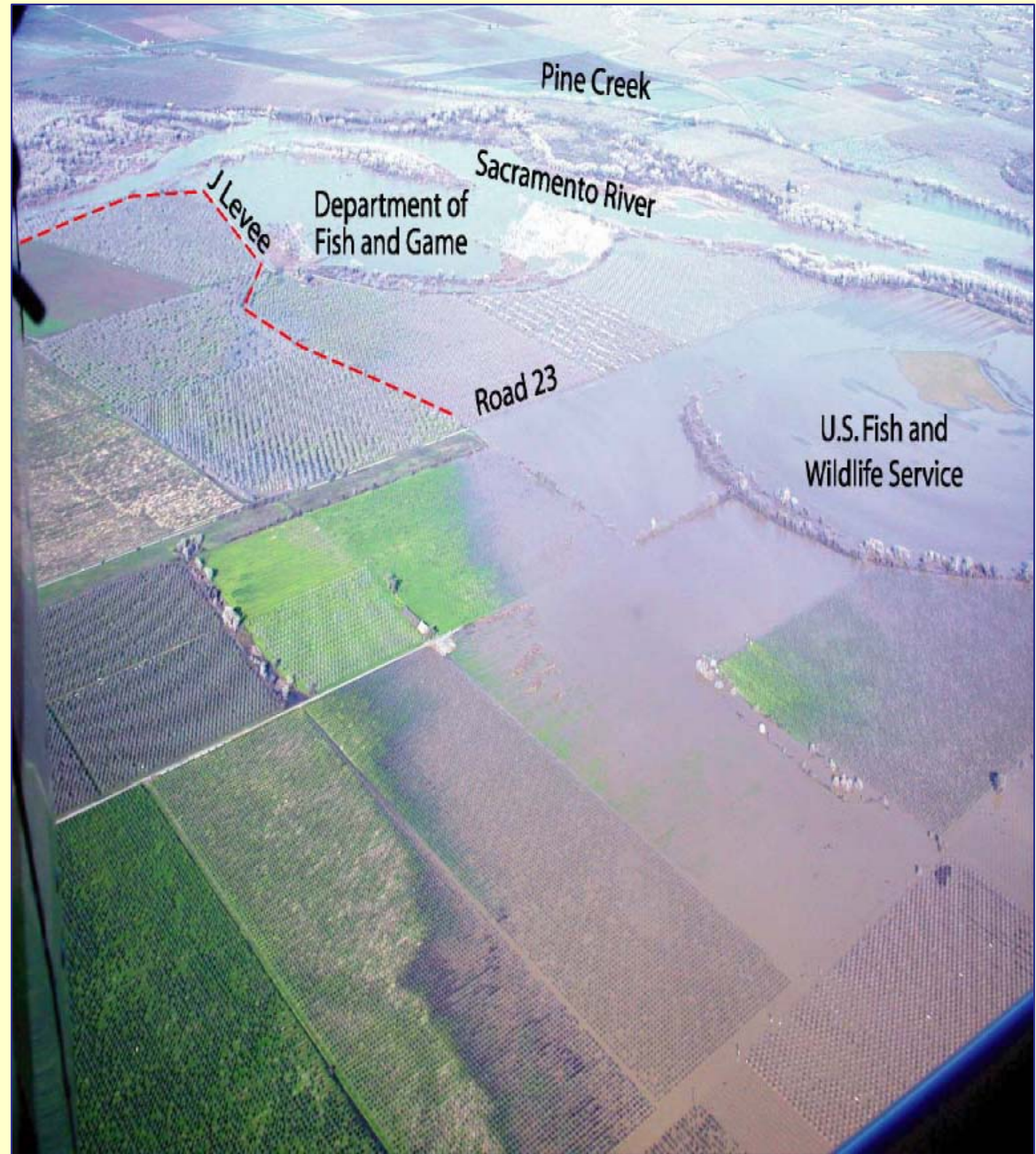


THE FLOODING PROBLEM

- **Hamilton City is in the Sacramento River floodplain with minimal flood protection**
- **The substandard J Levee was built circa 1904**
- **Multiple levee owners and no public maintenance program**
- **Only a 10+/- year level of flood protection**
- **Evacuation ordered 6 times in 25 years**
- **Hamilton City did not meet Army Corps Benefit/Cost Ratio standards for a new levee**

FLOODING IN 2004

***With only a
4 to 5-year flood***



PROJECT DEVELOPMENT

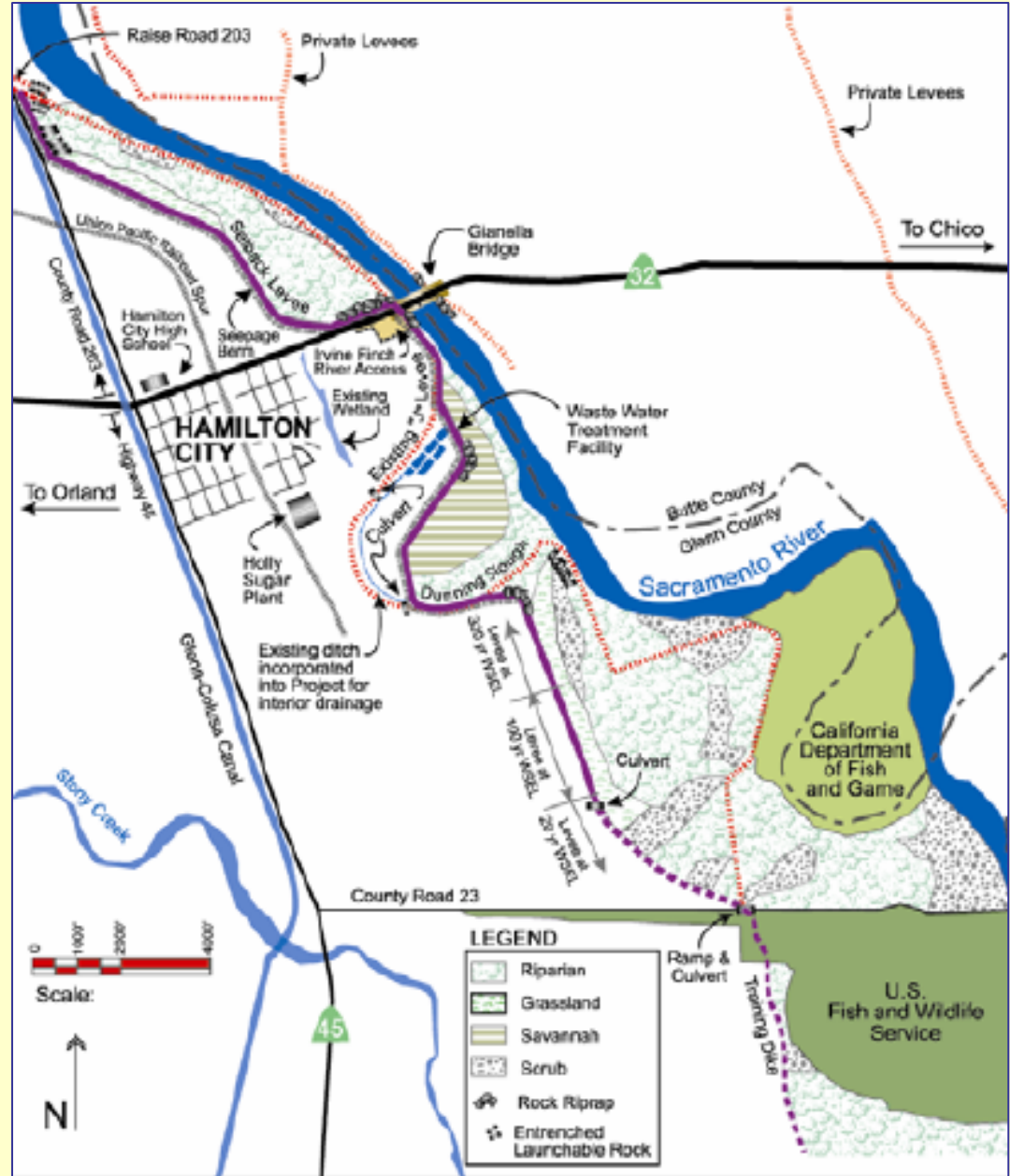
- **The Sacramento-San Joaquin Comprehensive Study identified a combined flood and ecosystem project**
- **Local community and farming interests engaged SRCAF, TNC and other partners to help**
- **Initial funding secured from CALFED, the Wildlife Conservation Board and DWR**
- **A local tax passed to help fund planning and future levee maintenance**

THE FLOODING SOLUTION

- **A new 6.8 mile long levee**
- **Setting the levee back from the river to provide enough room to accommodate floodwater displaced by the higher levee**
- **Restoring the land between the setback levee and the river to riparian habitat**
- **A positive Benefit /Cost Ratio was achieved with both flood damage reduction and ecosystem restoration benefits included in the calculations**

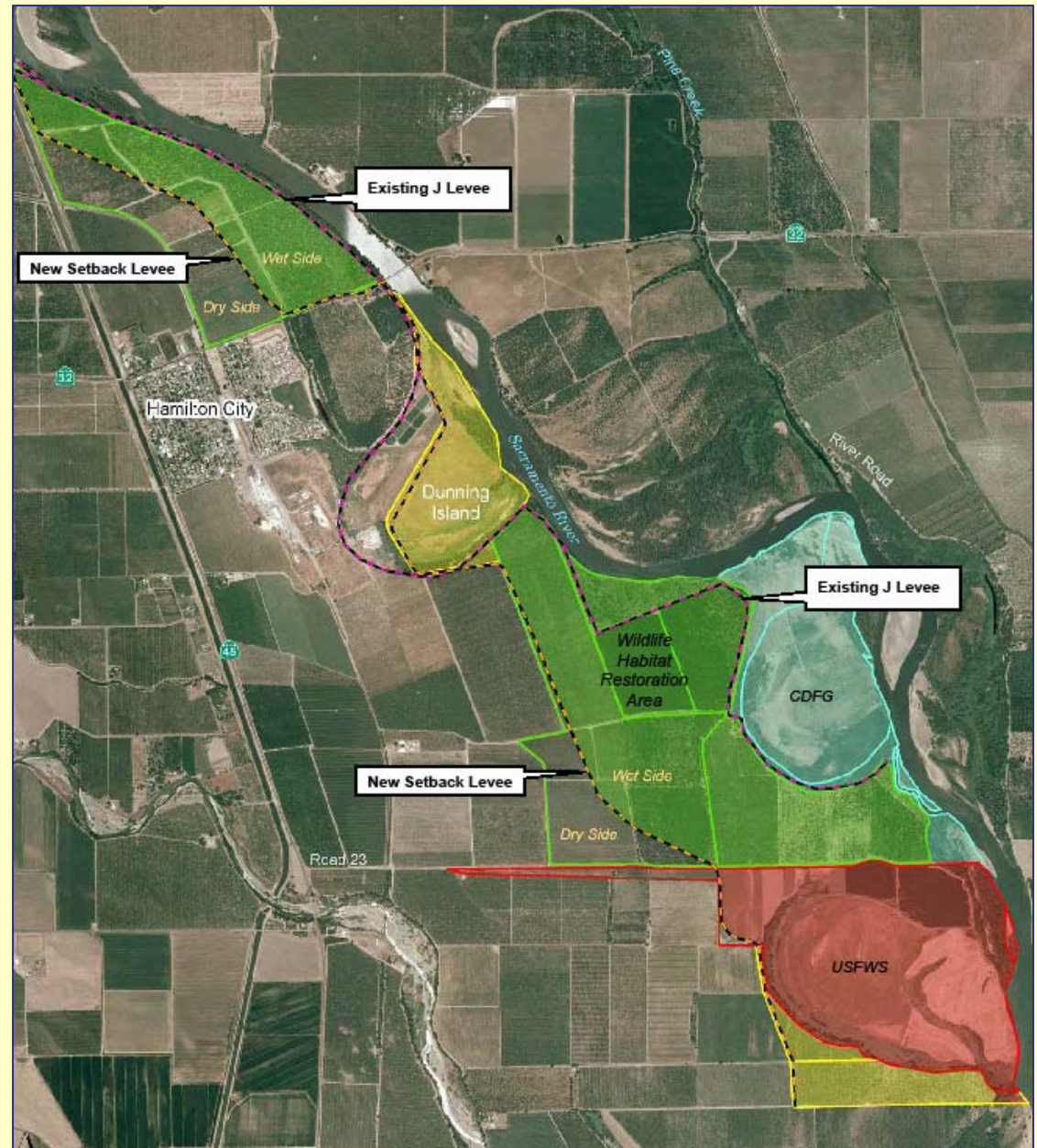
THE PROJECT BENEFITS

- Greatly increased flood protection for Hamilton City and surrounding farm land
- No increase in flood levels across the river
- 1400+ acres of restored riparian habitat
- Connecting 4000 acres of riparian habitat



PROJECT LAND ACQUISITION

- ❖ 1497 acres purchased by TNC to date
- ❖ 275 acres to be purchased by TNC
- ❖ 15 acres of easements to be donated by 6 public agencies



PROJECT MILESTONES

- **Feasibility Study/EIS/EIR in 2004**
- **Project authorization and design funding in WRDA in 2006**
- **RD 2140 formed in 2006**
- **Construction plans completed in 2009**
- **Construction is pending federal funding in the FY11 budget**
- **Construction starting in 2011**

THERE ARE MANY PARTNERS



Reclamation District No. 2140

